



**SOUTHERNIMPLANTS®**  
Innovative Treatment Solutions

# TITANIUM BLANKS



Engineered for limitless prosthetic solutions

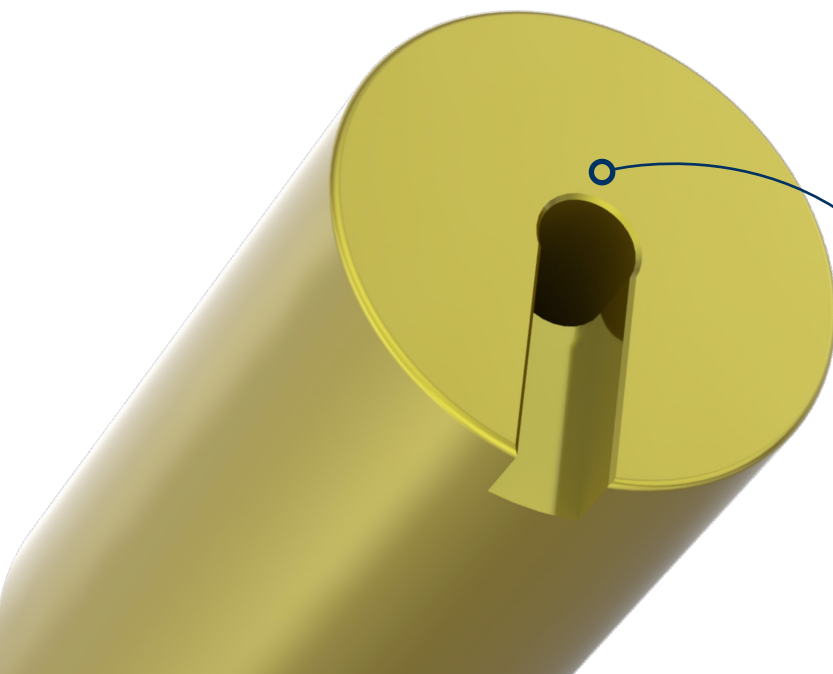
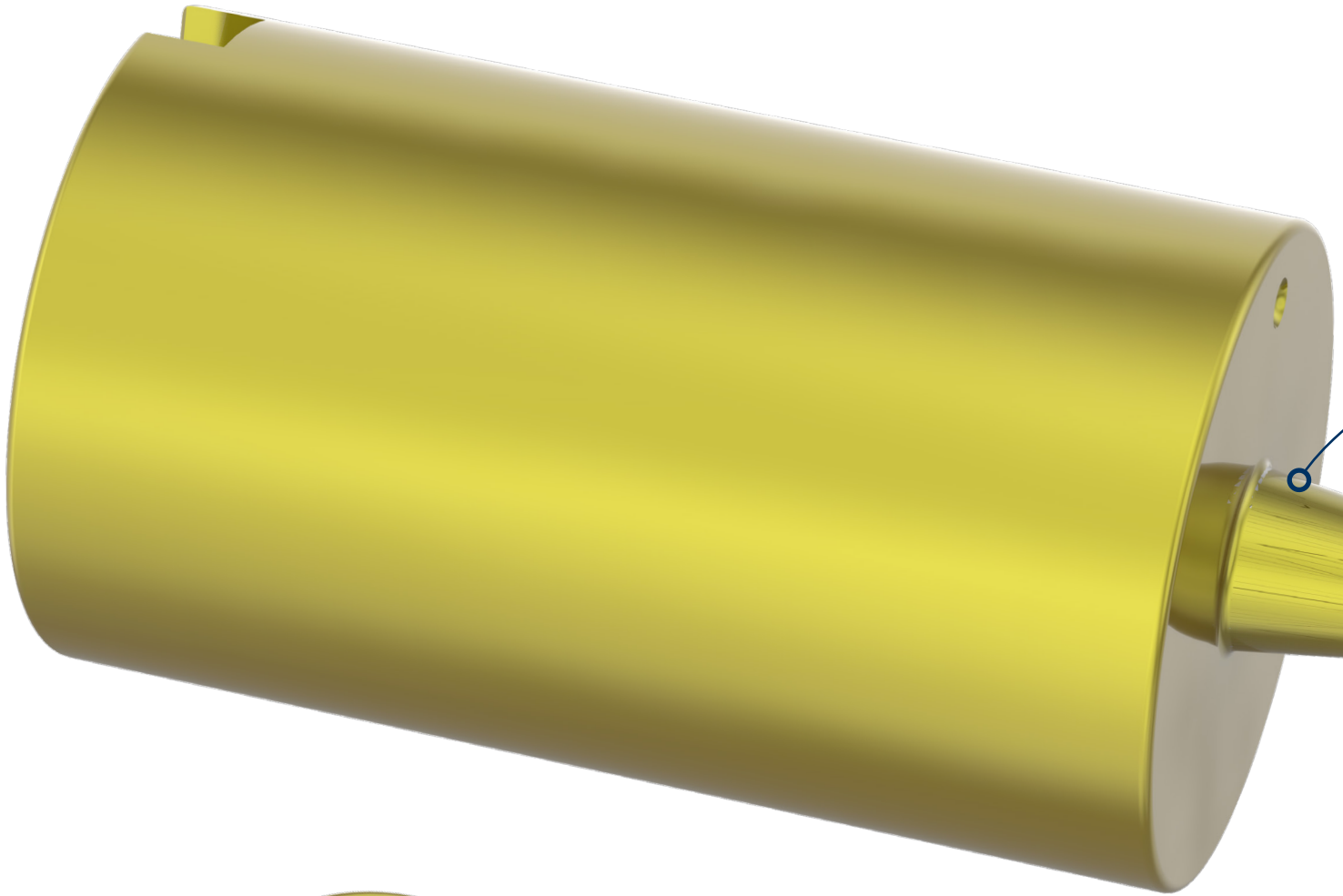


# INFINITE POSSIBILITIES

## *ULTIMATE PRECISION*

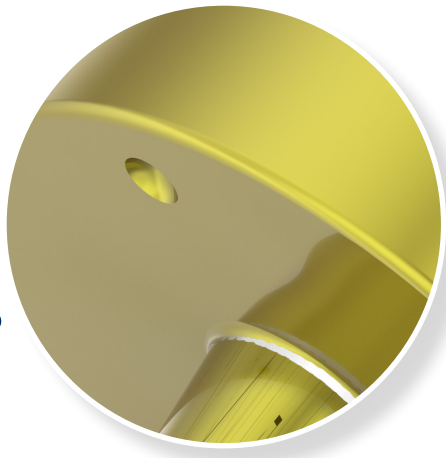
### Seamless Digital Workflow

Designed to integrate effortlessly with modern CAD/CAM systems, enabling efficient design processes for dental laboratories worldwide.



**Medentika Holder  
Compatibility**

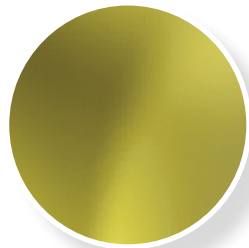
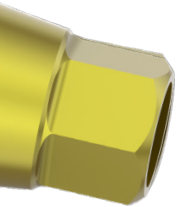
**Customisable abutments** that allow labs to create **custom profiles** while using the original Southern Implants implant-abutment interface.



**Alignment dimple  
for easy loading**

### **Smooth Interface Transition**

Ensures a precise, seamless transition between the custom profile and Southern Implants interface for optimal fit and performance.



### **Anodised Gold for Identification**

Signifies an original Southern Implants manufactured component.

### **Precision-Milled Southern Interface**

Manufactured from premium high-strength Grade 4 titanium, ensuring exceptional strength, durability, and long-term reliability.

# TITANIUM BLANKS

## Southern Workflow

### 1 Implant Position Scanning

Scan the implant position using the appropriate Southern Implants scan flag.

### 2 CAD Design Using Southern Libraries

Design the abutment in 3Shape or Exocad using the dedicated Southern Implants Titanium Blank libraries. These libraries enable design directly to the implant interface to ensure a smooth transition.

*NOTE: All blanks feature a built-in 0.35 mm collar, protecting the precision-milled Southern Implants interface during machining and ensuring complete and accurate seating.*

### 3 CAM Processing and Milling

Import the CAD files from 3Shape or Exocad into your preferred CAM software, complete the alignment process, and proceed with milling the component.

*NOTE: Southern Implants offers direct integration with Hyperdent and Millbox, with dedicated CAM libraries that enable seamless blank alignment. If using alternative CAM software that does not support manual blank alignment, the Medentika workflow can be followed as an alternative.*

## Medentika Workflow

### 1 Implant Position Scanning (Medentika Compatible)

Scan the implant position using a Medentika compatible scan flag.

### 2 CAD Design Using Medentika Libraries

Design the abutment in 3Shape or Exocad using Medentika libraries, following the recommended software selection outlined in the software selection table. The same software selection should be applied within your CAM software.

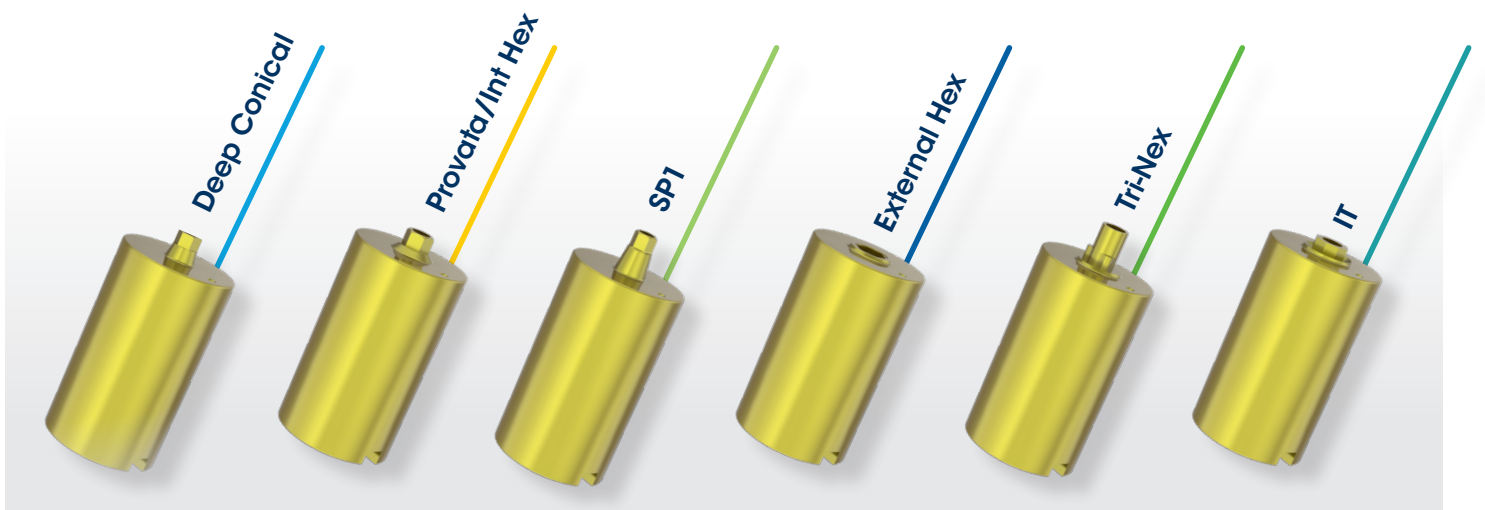
### 3 Blank Placement and Milling

Insert the Southern Implants Titanium blank into the Medentika holder and proceed with milling the abutment.

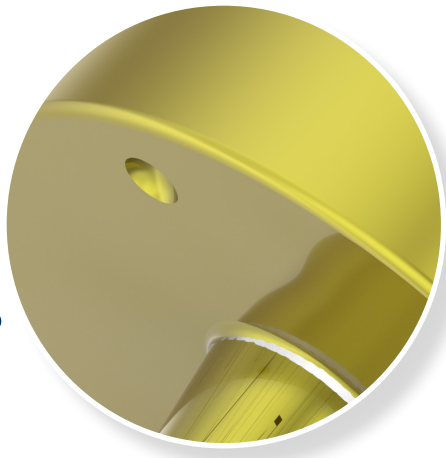


## Versatile Across the Southern Implants Range

Enabling the fabrication of a wide range of prosthetic solutions.



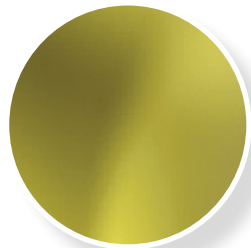
**Customisable abutments** that allow labs to create **custom profiles** while using the original Southern Implants implant-abutment interface.



**Alignment dimple  
for easy loading**

### **Smooth Interface Transition**

Ensures a precise, seamless transition between the custom profile and Southern Implants interface for optimal fit and performance.



### **Anodised Gold for Identification**

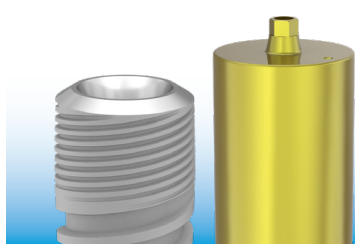
Signifies an original Southern Implants manufactured component.

### **Precision-Milled Southern Interface**

Manufactured from premium high-strength Grade 4 titanium, ensuring exceptional strength, durability, and long-term reliability.

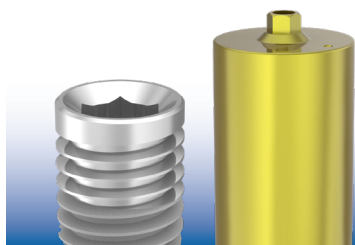
# TITANIUM BLANKS

# Range and Software Selection Options



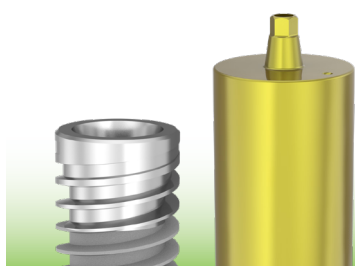
## Deep Conical

Product Code	Southern Workflow	Medentika Workflow
BL-DC3-11	BL-DC3-11	S 9030-R
BL-DC4-11	BL-DC4-11	S 9000-R
BL-DC5-11	BL-DC5-11	S 9020-R
BL-DCR5-11	BL-DCR5-11	N/A*



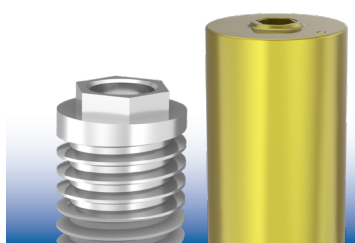
## Provata/Int Hex

Product Code	Southern Workflow	Medentika Workflow
BL-3M-11	BL-3M-11	N/A*
BL-M-11	BL-M-11	R 9000-R
BL-Z-11	BL-Z-11	R 9020-16R
BL-M-P45-11	BL-M-P45-11	N/A*



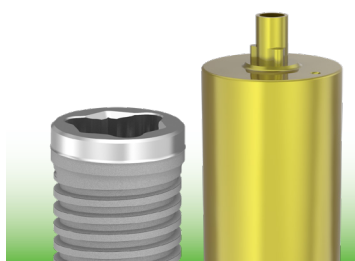
## SP1

Product Code	Southern Workflow	Medentika Workflow
BL-SP-11	BL-SP-11	GM 9000-R
BL-SP-11-ASC	BL-SP-11-ASC	GM 9000-R
BL-SP-PM-11	BL-SP-PM-11	N/A*



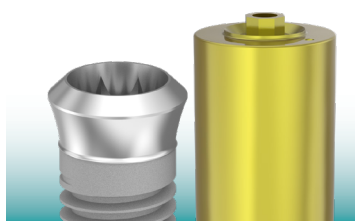
## External Hex

Product Code	Southern Workflow	Medentika Workflow
BL-EX30-11	BL-EX30-11	N/A*
BL-EX34-11	BL-EX34-11	I 9000-R
BL-EX40-11	BL-EX40-11	I 9010-R
BL-EX50-11	BL-EX50-11	I 9020-16R
BL-EX60-11	BL-EX60-11	N/A*



## Tri-Nex

Product Code	Southern Workflow	Medentika Workflow
BL-EL35-11	BL-EL60-11	E 9000-R
BL-EL43-11	BL-EL43-11	E 9010-R
BL-EL50-11	BL-EL50-11	E 9020-R
BL-EL60-11	BL-EL60-11	N/A*



## IT

Product Code	Southern Workflow	Medentika Workflow
BL-ITS-11	BL-ITS-11	N 9010-R
BL-IT6-11	BL-IT6-11	N 9020-R

NOTE: \*These abutments do not have a Medentika equivalents.

For more information scan below



to contact your Southern Implants Representative  
or visit [southernimplants.com](http://southernimplants.com)



**South Africa - Headquarters** 1 Albert Road, Irene, RSA  
**T:** +27-12-667-1046 | **E:** [info@southernimplants.com](mailto:info@southernimplants.com)

**EC REP**

Southern Implants Europe AB Holmgatan 30, S-791 71, Falun, Sweden  
**E:** [ecrep@southernimplants.com](mailto:ecrep@southernimplants.com)

#### Subsidiaries

##### **Australia**

Southern Implants Australia  
**T:** +61-8 -9466-2627  
**E:** [info@southernimplants.com.au](mailto:info@southernimplants.com.au)

##### **Spain and Portugal**

Southern Implants Ibérica  
**T:** +34-935-053-507  
**E:** [info@southernimplants.es](mailto:info@southernimplants.es)

##### **United Kingdom and Ireland**

Southern Implants UK  
**T:** +44-20-805-94490  
**E:** [info@southernimplants.co.uk](mailto:info@southernimplants.co.uk)

##### **USA and Canada**

Southern Implants North America Inc.  
**T:** +1-561-472-0990  
**E:** [customercare@southernimplants.com](mailto:customercare@southernimplants.com)

**Southern Implants® are distributed world-wide, please visit [southernimplants.com](http://southernimplants.com) for a list of Distributors.  
For the latest and full assortment of Southern Implants' products, visit our current resources library at [southernimplants.com](http://southernimplants.com).**