

# SINGLE PLATFORM

## Expanding Simplicity

### Thread and body design to give predictable stability

Dual start, deep apical threads with plentiful space for bone between threads, leads to consistent placement.

### Environmentally sustainable

Southern's focus towards responsible manufacturing is a dedicated investment to a more sustainable future.

### Spiral flute to balance self-tapping and compression

Designed to control insertion torque and optimise stability.

### Titanium Nitride coated

Indicated to reduce early bacterial colonisation, bio-film formation and enhance fibroblast cell proliferation and attachment.<sup>1</sup>

### A combination of two trusted connections:

**Internal cone** (8° off the vertical axis) which Southern has been using for over 20 years, provides a tight abutment seal.

Long **Internal hex** facilitates tactile feel during the placement of prosthetic components.

### Energy-efficient practices

Environmental awareness and sustainable business practices is a Southern priority. Complete solar power generation and energy-efficient drives reduce our environmental footprint and conserve resources.

### Unlock full-arch confidence

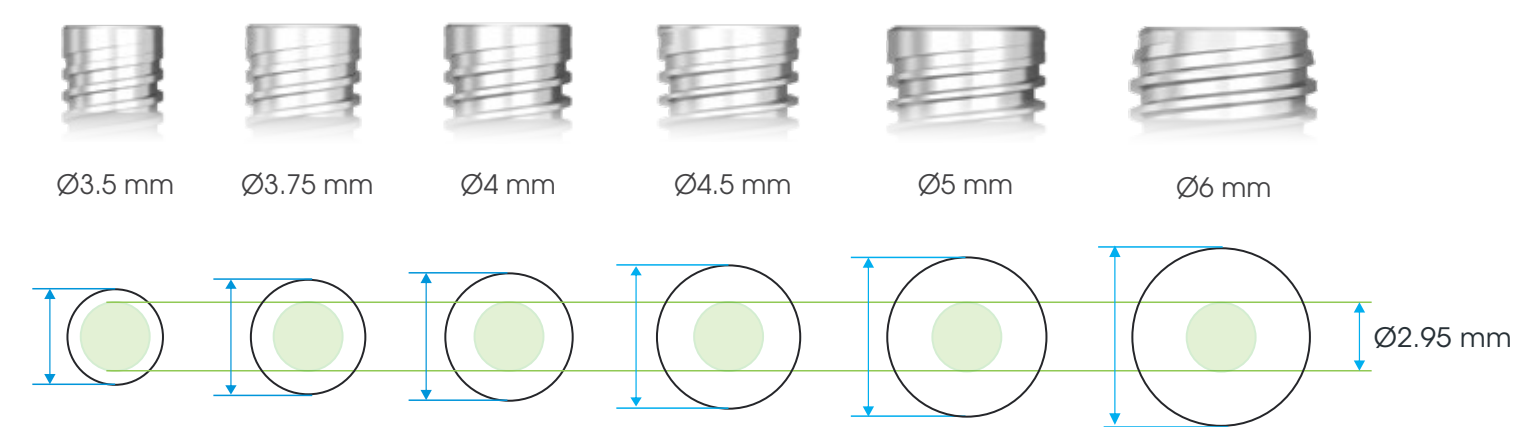
The SP1 Pterygoid completes the range, offering a unified full-arch solution with streamlined prosthetics and pterygoid anchorage options.

### One prosthetic platform across all implant diameters

**Simplified Implant Planning and Guided Surgery Procedures**  
Achieved through the use of **ONE** fixed offset.

**Simplified Surgery**  
Utilise **ONE** surgical kit for all procedures.

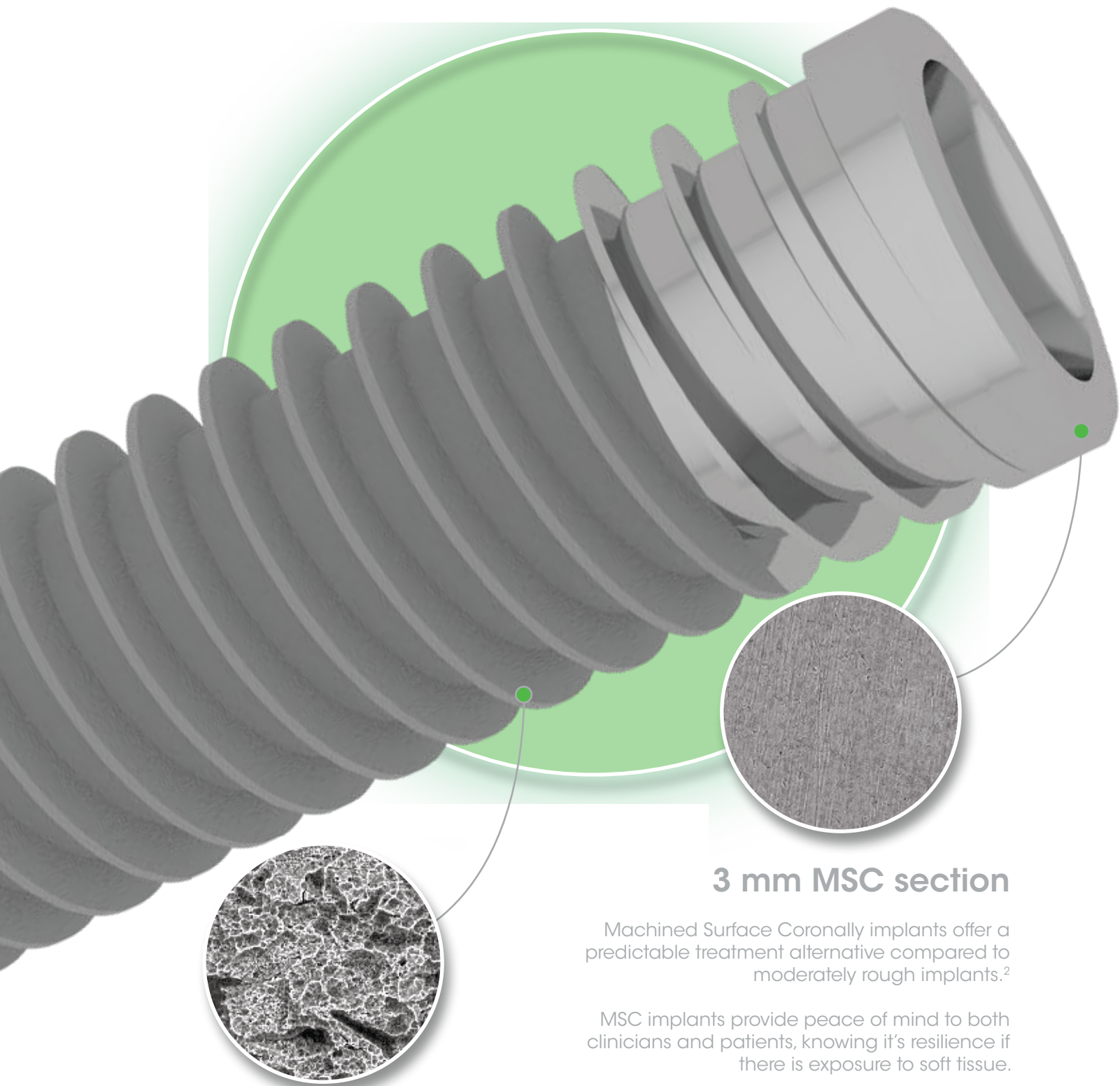
**Simplified Full Arch Prosthetics**  
Made possible by the **ONE**-size prosthetic platform.



Platform matching available for the Ø4.5, Ø5 and Ø6 mm range.



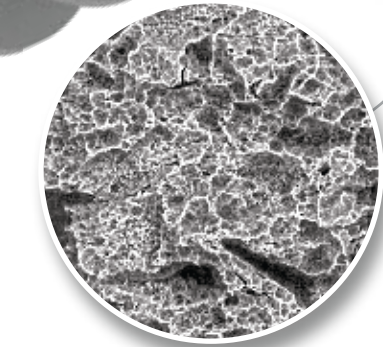
# Simplicity



## 3 mm MSC section

Machined Surface Coronally implants offer a predictable treatment alternative compared to moderately rough implants.<sup>2</sup>

MSC implants provide peace of mind to both clinicians and patients, knowing it's resilience if there is exposure to soft tissue.



## Slnergy surface

With over 25 years of clinical results.

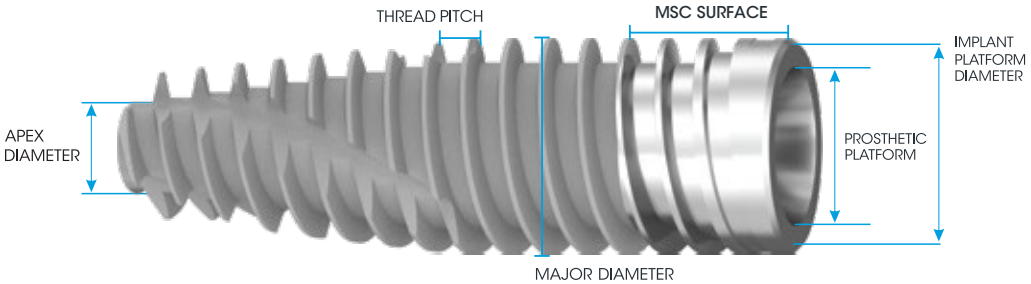


This award confirms Southern's adherence to the highest quality level in the production of our dental implant ranges.

## IMPLANT DIMENSIONS AND INFORMATION

| SINGLE PLATFORM |          | MAJOR DIAMETER | IMPLANT PLATFORM DIAMETER | PROSTHETIC PLATFORM | HEX WIDTH (across flats) | MSC SURFACE | THREAD PITCH (double start) | APEX DIAMETER | IMPLANT LENGTHS |    |      |    |    |    |    |    |    |
|-----------------|----------|----------------|---------------------------|---------------------|--------------------------|-------------|-----------------------------|---------------|-----------------|----|------|----|----|----|----|----|----|
|                 |          |                |                           |                     |                          |             |                             |               | 8               | 10 | 11.5 | 13 | 16 | 18 | 20 | 22 | 24 |
| MSC-SP35xx      | Ø3.5 mm  | 3.5            | 3.3                       | 2.95                | 2.0                      | 3.0         | 1.50                        | 2.85          | ✓               | ✓  | ✓    | ✓  | ✓  | ✓  | ✓  | ✓  | ✓  |
| MSC-SP37xx      | Ø3.75 mm | 3.75           | 3.5                       | 2.95                | 2.0                      | 3.0         | 1.50                        | 3.0           | ✓               | ✓  | ✓    | ✓  | ✓  | ✓  | ✓  | ✓  | ✓  |
| MSC-SP40xx      | Ø4.0 mm  | 4.0            | 3.8                       | 2.95                | 2.0                      | 3.0         | 1.50                        | 3.0           | ✓               | ✓  | ✓    | ✓  | ✓  | ✓  | ✓  | ✓  | ✓  |
| MSC-SP45xx      | Ø4.5 mm  | 4.5            | 4.5                       | 2.95*               | 2.0                      | 3.0         | 1.50                        | 3.2           | ✓               | ✓  | ✓    | ✓  | ✓  | ✓  |    |    |    |
| MSC-SP50xx      | Ø5.0 mm  | 5.0            | 4.5                       | 2.95*               | 2.0                      | 3.0         | 1.50                        | 3.2           | ✓               | ✓  | ✓    | ✓  | ✓  | ✓  |    |    |    |
| MSC-SP60xx      | Ø6.0 mm  | 6.0            | 5.0                       | 2.95*               | 2.0                      | 3.0         | 1.50                        | 3.75          | ✓               | ✓  | ✓    | ✓  | ✓  |    |    |    |    |
| PTERYGOID       |          |                |                           |                     |                          |             |                             |               | 8               | 10 | 11.5 | 13 | 15 | 18 | 20 | 22 | 24 |
| PT-SP40xx       | Ø4.0 mm  | 4.0            | 3.3                       | 2.95                | 2.0                      | 3.0         | 1.50                        | 2.85          |                 | ✓  | ✓    | ✓  | ✓  | ✓  | ✓  | ✓  | ✓  |

\*4.5 when utilising platform matched componentry.



## AN EXTENSIVE RANGE OF PROSTHETIC OPTIONS ENGINEERED WITH SUPERIOR ROBUSTNESS



References

1. Chouirfa, H., Bouloussa, H., Migonney, V. and Falentin-Daudré, C., 2019. Review of titanium surface modification techniques and coatings for antibacterial applications. Acta biomaterialia, 83, pp.37-54.
2. Gilbert M, Matthys C, Van Lancker A, Segers A, De Bruyn H. A Long-Term Split-Mouth Randomized Controlled Trial to Assess Implant Treatment Outcome Using Implants with a Different Surface Roughness. Applied Sciences. 2024; 14(4):1658

For more information scan the below



to contact your Southern Implants Representative or visit [southernimplants.com](https://southernimplants.com)



South Africa - Headquarters 1 Albert Road, Irene, RSA  
T: +27-12-667-1046 | E: [info@southernimplants.com](mailto:info@southernimplants.com)

**EC REP**  
Southern Implants Europe AB Holmgatan 30, S-791 71, Falun, Sweden  
E: [ecrep@southernimplants.com](mailto:ecrep@southernimplants.com)

### Subsidiaries

**Australia**  
Southern Implants Australia  
T: +61-2-8076-9337  
E: [info@southernimplants.com.au](mailto:info@southernimplants.com.au)

**Spain and Portugal**  
Southern Implants Ibérica  
T: +34-935-053-507  
E: [info@southernimplants.es](mailto:info@southernimplants.es)

**United Kingdom and Ireland**  
Southern Implants UK  
T: +44-20-805-94490  
E: [info@southernimplants.co.uk](mailto:info@southernimplants.co.uk)

**USA and Canada**  
Southern Implants North America Inc.  
T: +1-561-472-0990  
E: [customer-care@southernimplants.com](mailto:customer-care@southernimplants.com)

Southern Implants® are distributed world-wide, please visit [southernimplants.com](https://southernimplants.com) for a list of Distributors.  
For the latest and full assortment of Southern Implants' products, visit our current resources library at [southernimplants.com](https://southernimplants.com).



## SP1 Implant Range

Southern's Single Platform Implant System

