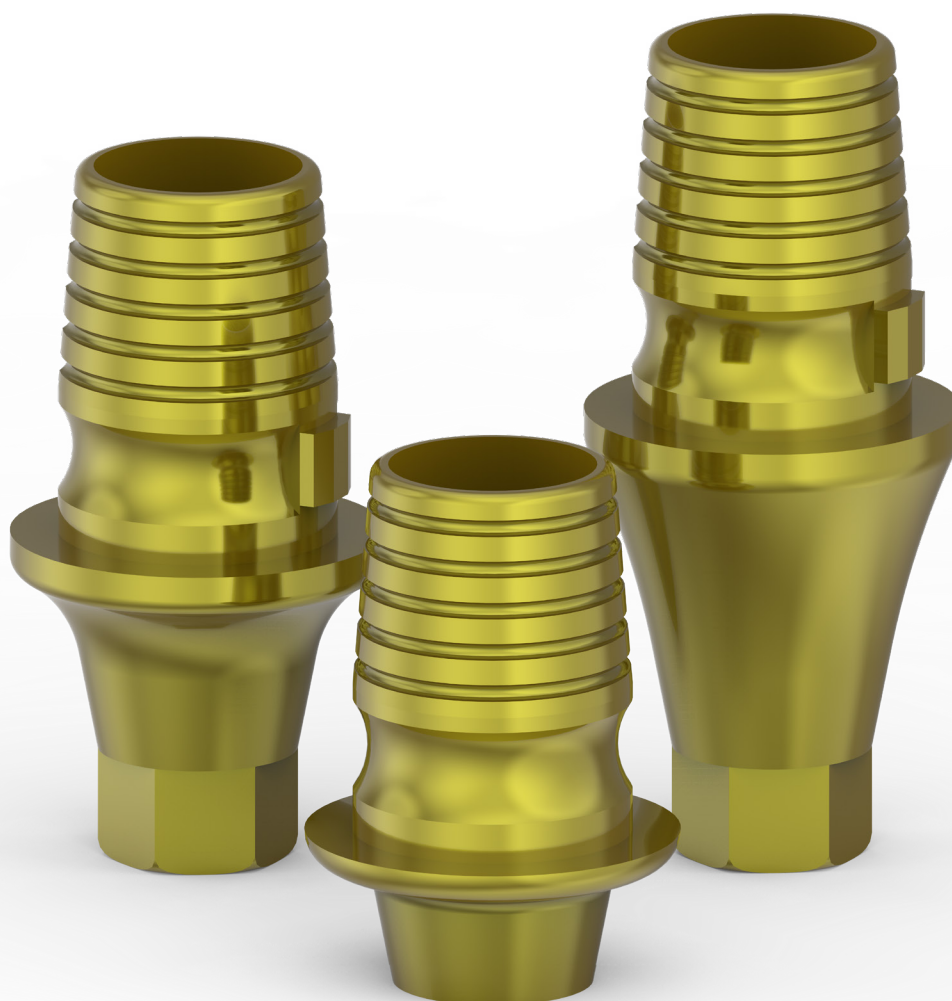


# TIB Abutment

---

A secure solution designed for modern dentistry



# Precision restorations with Southern Implants' Titanium Base Abutment (TIB)

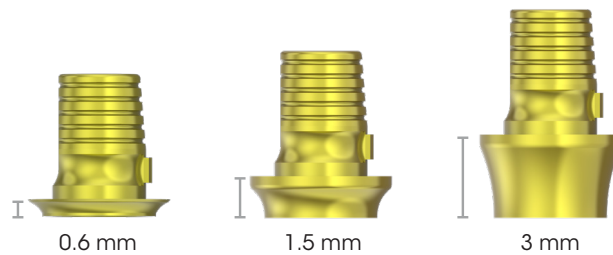
Engineered for superior performance, our TIB ensures precise fit and optimal aesthetic results, tailored to your clinical needs.

# TITANIUM BASE

## Abutments

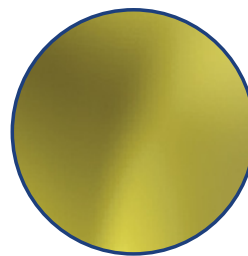
### Different collar heights

Platform widths designed to match SIRONA compatible workflows with an additional 3 collar heights ideal for soft tissue profiling.



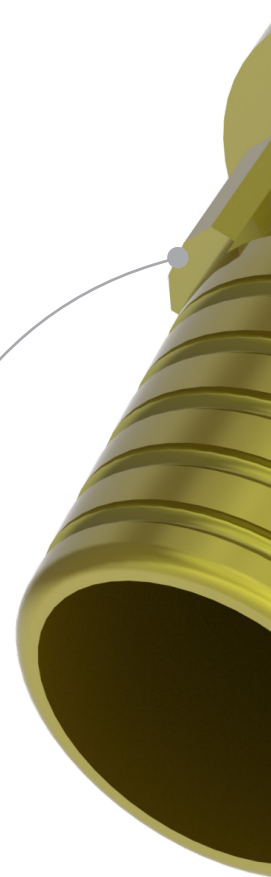
### Yellow anodised for aesthetics

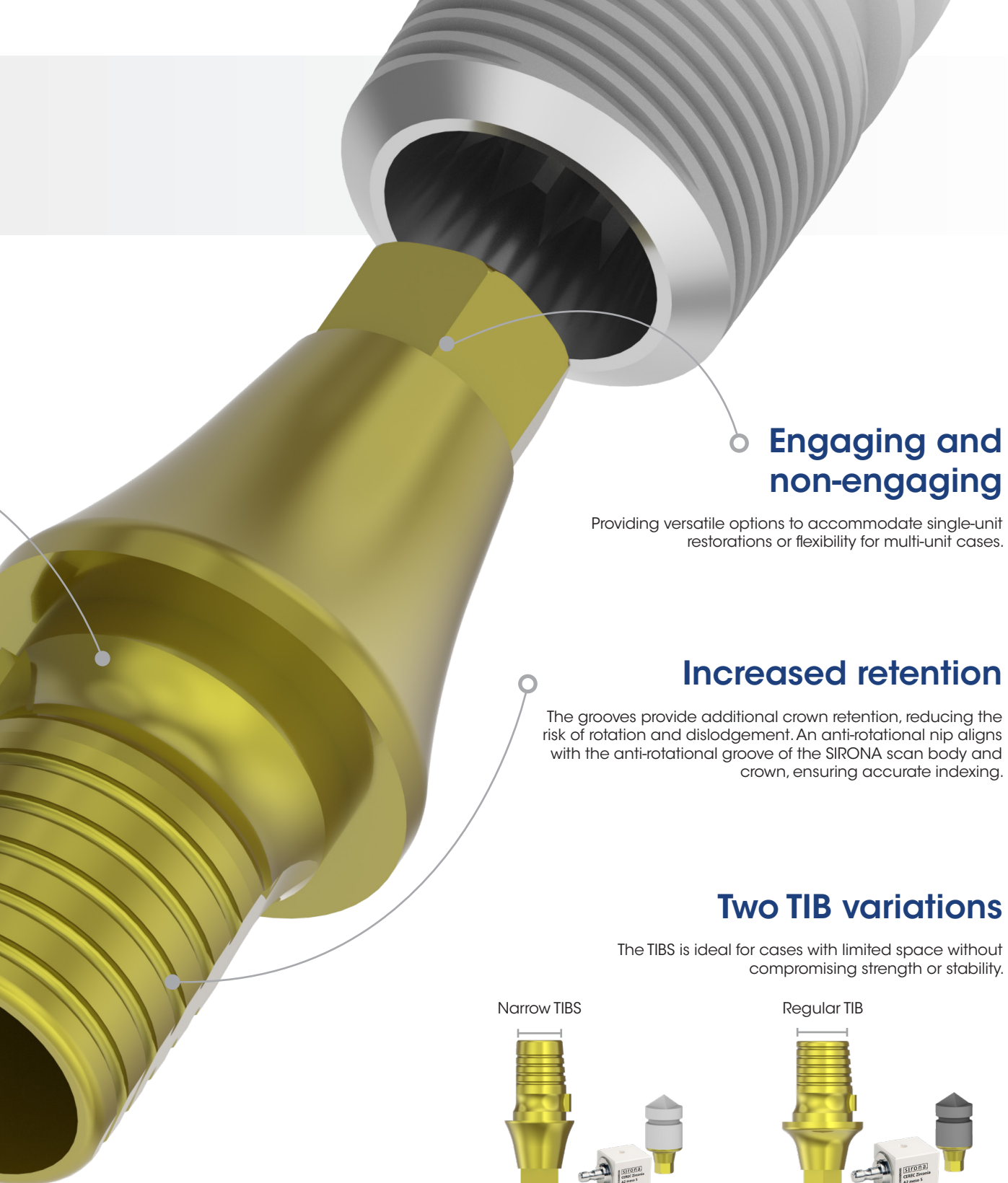
Providing less abutment shine through in thin biotype/ thin soft tissue.



### Anti-rotational nip

The anti-rotational flat on the TIB abutment ensures precise positioning and prevents any unwanted rotation of the crown.





## Engaging and non-engaging

Providing versatile options to accommodate single-unit restorations or flexibility for multi-unit cases.

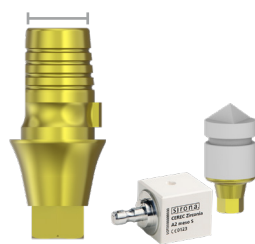
## Increased retention

The grooves provide additional crown retention, reducing the risk of rotation and dislodgement. An anti-rotational nip aligns with the anti-rotational groove of the SIRONA scan body and crown, ensuring accurate indexing.

## Two TIB variations

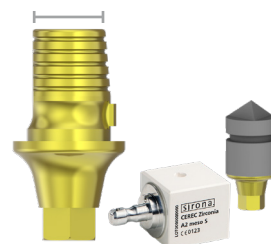
The TIBS is ideal for cases with limited space without compromising strength or stability.

Narrow TIBS



Utilises **small** scan body and abutment block

Regular TIB



Utilises **large** scan body and abutment block

## SiDigital workflow

The TIB abutments are compatible with digital workflows in:

# SIGuided Workflow

SIGuided refers to Southern Implants' range of guided surgery workflows.

These workflows provide clinicians with a comprehensive solution for planning and executing guided implant surgeries using a surgical guide. SIGuided ensures more predictable outcomes, reduced chair time and increased patient comfort.



## 1 Patient consultation

Personalised care starts here

Clinicians assess the patient's individual dental needs and discuss treatment options.

## 2 Obtaining the patient scan

Precision from the outset

A detailed digital scan of the patient's mouth is taken to capture the exact anatomy.

## 3 Implant planning

Advanced planning for predictable outcomes

Clinicians map out the ideal implant placement based on the patient's scan.

## 4 Guide design

Custom guides for a seamless surgery

A customised surgical guide is designed which is tailored to the patient's unique anatomy, ensuring accuracy in implant positioning.

## 5 Guide manufacturing

High-quality fabrication for precision

The designed surgical guide is manufactured using advanced 3D printing or milling technologies.

## 6 Performing the guided surgery

Precision execution for optimal results

The custom surgical guide is used to assist the clinician in placing the implants. The guided workflow minimises the risk of error and reduces surgical time.



## Streamlining digital solutions for precision restorations.

The SIDigital workflow enables clinicians and dental laboratories to digitally design and manufacture dental prosthetics using Southern Implants' components. These workflows ensure seamless integration from scan to design, allowing for the precise manufacturing of dental restorations.

exocad 3shape  dental wings

 Dentsply  
Sirona

### 1 Patient preparation

Ensure the patient's mouth is clean and free of any debris or obstructions, allowing for accurate digital impressions.

### 2 Placement of the scan flag

Attach the scan flag to the implant, making sure it is securely seated and properly oriented for accurate scanning. Verify the seating of the scan flag using x-ray imaging.

### 3 Intraoral scan

Follow the recommended scan protocol for the intraoral scanner to scan and capture a precise digital impression. Ensure the scan flag and surrounding anatomical structures are clearly captured.

*For extra-oral workflows, take traditional impressions, pour a model and continue digitally by scanning the model with a desktop scanner.*

### 4 Import scan data into the corresponding software

Once the intraoral scan is complete, import the scan data into the design software for alignment and further design steps.

### 5 Align scan flag with digital library

Utilise the software's digital library to match and align the scan flag with the corresponding implant system.

### 6 Design and manufacture the crown

With the scan flag properly aligned, proceed with designing the prosthetic restoration. After finalising the design, transfer the data to a milling machine or 3D printer for manufacturing the restoration.

### 1 Patient preparation

Begin by preparing the patient's mouth, ensuring the scan area is clean and ready for digital capture.

### 2 Placement of the TIB abutment

The TIB abutment is available at collar heights of 0.6, 1.5, and 3mm. Select the collar height best suited to the patient's soft tissue. Attach the abutment to the implant with the prosthetic screw\*.

*\*(sold separately)*

### 3 Placement of the scan body

Place the SIRONA scan body onto the TIB abutment, ensuring it is properly seated and oriented. Confirm that the correct size (L or S) and colour (grey or white) is used, as specified by your SIRONA scanner.

### 4 Software selection

Navigate and select the corresponding software settings that match the specific TIB abutment being used.

### 5 Perform intraoral scan

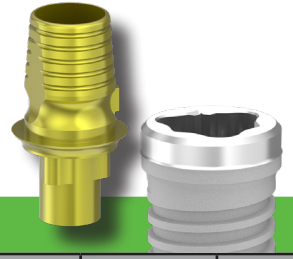
Follow the intraoral scan procedures to capture an accurate digital impression, ensuring the scan body and surrounding anatomy are recorded.

*For extra-oral workflows, a desktop scan can be performed using a physical model.*

### 6 Design and manufacture the crown

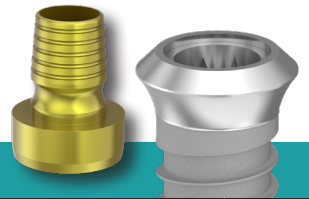
Using the SIRONA software, design the crown based on the digital scan. The crown is then milled from the corresponding abutment block, as defined in the workflow tables.

# TIB Software Selection



## TRI-NEX®

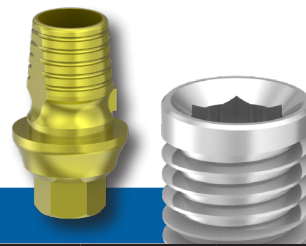
Scan flag	Digital lab analogue	Compatible implants	Main library selection	Secondary selection	Tertiary selection (Abutment code)	Retaining screw	TIB Sirona 3rd party software selection	Abutment block / scan body size	Screw torque value (Ncm)
SFT-EL-35	LAD-L-35	IA-LH-35-xx IA-LHS-35-xx IA43-12D-xx	Southern Implants Tri-Nex®	SI EL 35 Ti-Base (TIB) "SFT-EL-35"	TIB-EL-35-C1.5 TIB-EL-35-C3 TIB-EL-35 TIB-NL-35-C1.5 TIB-NL-35-C3 TIB-NL-35	TS-L-18	NB RS 3.5L	L	32
SFT-EL-43	LAD-L-43	IA-LH-43-xx IA-LHS-43-xx IA50-12D-xx	Southern Implants Tri-Nex®	SI EL 43 Ti-Base (TIB) "SFT-EL-43"	TIB-EL-43 TIB-EL-43-C1.5 TIB-EL-43-C3 TIB-NL-43 TIB-NL-43-C1.5 TIB-NL-43-C3	TS-L-20	NB RS 4.3L	L	32-40
SFT-EL-50	LAD-L-50	IA-LH-50-xx IA-LHS-50-xx TRI-MAX7xx	Southern Implants Tri-Nex®	SI EL 50 Ti-Base (TIB) "SFT-EL-50"	TIB-EL-50 TIB-EL-50-C1.5 TIB-EL-50-C3 TIB-NL-50 TIB-NL-50-C1.5 TIB-NL-50-C3	TS-L-20	NB RS 5.0L	L	32-40
SFT-EL-60	LAD-L-60	IA-LH-60-xx TRI-MAX8xx TRI-MAX9xx	Southern Implants Tri-Nex®	SI EL 60 Ti-Base (TIB) "SFT-EL-60"	TIB-EL-60 TIB-EL-60-C1.5 TIB-EL-60-C3 TIB-NL-60 TIB-NL-60-C1.5 TIB-NL-60-C3	TS-L-20	NB RS 6.0L	L	32-40



## Internal Octagon (IT)

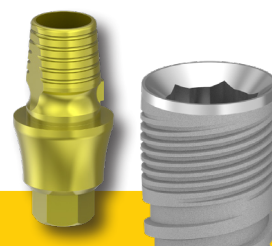
Scan flag	Digital lab analogue	Compatible implants	Main library selection	Secondary selection	Tertiary selection (Abutment code)	Retaining screw	TIB Sirona 3rd party software selection	Abutment block / scan body size	Screw torque value (Ncm)
SFT-IT	LAD-ITS	ITC3xx / ITC3xxF ITC4xx / ITC4xxF ITT4xx / ITT4xxF ITST12D-4xxF ITC5xx ITT5xx / ITT5xxF ITST12D-5xxF MAXIT7-xxF	Southern Implants Internal Octagon (IT)	SI IT Ti-Base (TIB) "SFT-ITS"	TIB-ITS-C1.5 TIB-ITS-C3 TIB-ITS TIB-ITSNE-C1.5 TIB-ITSNE-C3 TIB-ITSNE	TS-IT-TIB	NB RS 4.3L	L	32-40
SFT-IT6	LAD-IT6	ITT6xxF ITC6-5xx ITT6-5xx MAXIT8-xxF MAXIT9-xxF	Southern Implants Internal Octagon (IT)	SI IT6 Ti-Base (TIB) "SFT-IT6"	TIB-ITS6-C1.5 TIB-ITS6-C3 TIB-ITS6 TIB-ITS6NE-C1.5 TIB-ITS6NE-C3 TIB-ITS6NE	TS-IT-TIB	NB RS 6.0L	L	32-40

# TIB Software Selection



## PROVATA®

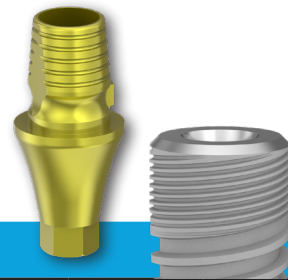
Scan flag	Digital lab analogue	Compatible implants	Main library selection	Secondary selection	Tertiary selection (Abutment code)	Retaining screw	TIB Sirona 3rd party software selection	Abutment block / scan body size	Screw torque value (Ncm)
SFT-PRO3	LAD-3M	MSC-PRO3xx / MSC-PRO3xxNF MSC-PRO12D3xx	Southern Implants PROVATA® (Internal Hex)	SI 3M Narrow Ti-Base (TIBS) "SFT-PRO3"	TIBS-3M-C1.5 TIBS-3M-C3	TS-Z-16	FX 3.8	S	32
SFT-M	LAD-M	PRO4xx / MSC-PRO4xx PRO12D4xx / MSC-PRO12D4xx PRO5xx / MSC-PRO5xx PRO12D5xx / MSC-PRO12D5xx PROMAX6xx / MSC-PROMAX6xx	Southern Implants PROVATA® (Internal Hex)	SI M Ti-Base (TIB) "SFT-M"	TIB-M TIB-M-C1.5 TIB-M-C3 TIB-NM TIB-NM-C1.5 TIB-NM-C3	TS-Z-18	NB RS 4.3L	L	32
SFT-M	LAD-M-P45	Platform matched: PRO5xx / MSC-PRO5xx PRO12D5xx / MSC-PRO12D5xx PROMAX6xx / MSC-PROMAX6xx	Southern Implants PROVATA® (Internal Hex)	SI M-P45 Ti-Base (TIB) "SFT-M"	TIB-M-P45	TS-Z-18	NB RS 4.3L	L	32
SFT-Z	LAD-Z	MSC-PRO6xx PROMAX7xx / MSC-PROMAX7xx PROMAX8xx / MSC-PROMAX8xx PROMAX9xx / MSC-PROMAX9xx	Southern Implants PROVATA® (Internal Hex)	SI Z Ti-Base (TIB) "SFT-Z"	TIB-Z TIB-Z-C1.5 TIB-Z-C3 TIB-NZ TIB-NZ-C1.5 TIB-NZ-C3	TS-Z-18	BO 5.0L	L	32



## Internal Hex (M-Series)

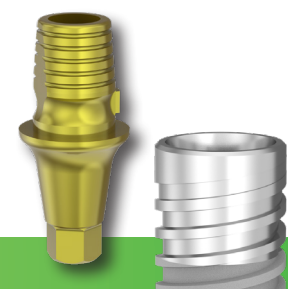
Scan flag	Digital lab analogue	Compatible implants	Main library selection	Secondary selection	Tertiary selection (Abutment code)	Retaining screw	TIB Sirona 3rd party software selection	Abutment block / scan body size	Screw torque value (Ncm)
SFT-M	LAD-M	IM-T37xx IM-T42xx IM-T4210-12D IM-T50xx	Southern Implants M-Series (Internal Hex)	SI M Ti-Base (TIB) "SFT-M"	TIB-M TIB-M-C1.5 TIB-M-C3 TIB-NM TIB-NM-C1.5 TIB-NM-C3	TS-Z-18	NB RS 4.3L	L	32
SFT-M	LAD-M-P45	Platform matched: IM-T50xx	Southern Implants M-Series (Internal Hex)	SI M-P45 Ti-Base (TIB) "SFT-M"	TIB-M-P45	TS-Z-18	NB RS 4.3L	L	32

# TIB Software Selection



## Deep Conical

Scan flag	Digital lab analogue	Compatible implants	Main library selection	Secondary selection	Tertiary selection (Abutment code)	Retaining screw	TIB Sirona 3rd party software selection	Abutment block / scan body size	Screw torque value (Ncm)
SFT-DC3	LAD-DC3	DCT30xx DCC30xx DCT35xx-12D DCC35xx-12D IVM-DC-30-37xx / IV-DC30-37xx	Southern Implants Deep Conical (DC)	SI DC3 Narrow Ti-Base (TIBS) "SFT-DC3"	TIBS-DC3-C1.5 TIBS-DC3-C3	TS-DC3-14	FX 3.8 S	S	20
SFT-DC4	LAD-DC4	DCT35xx DCC35xx DCT40xx DCC40xx DCR50xx DCT50xx-12D DCC50xx-12D IVM-DC35-45xx / IV-DC35-45xx IVM-DC3512D-45xx / IV-DC3512D-45xx PT-DC40xx	Southern Implants Deep Conical (DC)	SI DC4 Narrow Ti-Base (TIBS) "SFT-DC4"	TIBS-DC4-C1.5 TIBS-DC4-C3	TS-DC3-16	FX 3.8 S	S	30
SFT-DC4	LAD-DC4	DCT35xx DCC35xx DCT40xx DCC40xx DCR50xx IVM-DC35-45xx / IV-DC35-45xx IVM-DC3512D-45xx / IV-DC3512D-45xx PT-DC40xx	Southern Implants Deep Conical (DC)	SI DC4 Ti-Base (TIB) "SFT-DC4"	TIB-DC4 TIB-DC4-C1.5 TIB-DC4-C3 TIB-NDC4 TIB-NDC4-C1.5 TIB-NDC4-C3	TS-DC3-16	AT OS 3.5/4.0L	L	30
SFT-DC4	LAD-DCR5	Platform matched: DCR50xx	Southern Implants Deep Conical (DC)	SI DCR5 Ti-Base (TIB) "SFT-DC4"	TIB-DCR5 TIB-DCR5-C1.5 TIB-DCR5-C3	TS-DC3-16	FX 5.5 L	L	30
SFT-DC5	LAD-DC5	DCT50xx DCC50xx IVM-DC50-60xx / IV-DC50-60xx	Southern Implants Deep Conical (DC)	SI DC5 Ti-Base (TIB) "SFT-DC5"	TIB-DC5 TIB-DC5-C1.5 TIB-DC5-C3 TIB-NDC5 TIB-NDC5-C1.5 TIB-NDC5-C3	TS-DC3-20	AT OS 4.5/5.0L	L	32

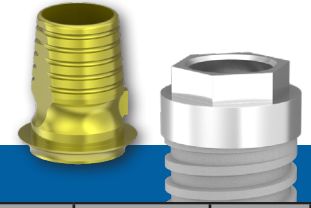


## Single Platform (SP1)

Scan flag	Digital lab analogue	Compatible implants	Main library selection	Secondary selection	Tertiary selection (Abutment code)	Retaining screw	TIB Sirona 3rd party software selection	Abutment block / scan body size	Screw torque value (Ncm)
SFT-SP	LAD-SP	MSC-SP35xx MSC-SP40xx MSC-SP50xx	Southern Implants Single Platform (SP1)	SI SP Ti-Base (TIB) "SFT-SP"	TIB-SP-C1.5 TIB-SP-C3 TIB-NSP-C1.5 TIB-NSP-C3	TS-SP-16	FX 4.5 L	L	32
SFT-SP	LAD-SP-PM	Platform Matched: MSC-SP50xx	Southern Implants Single Platform (SP1)	SI SP-PM Ti-Base (TIB) "SFT-SP"	TIB-SP-PM-C1.5 TIB-SP-PM-C3	TS-SP-16	FX 5.5 L	L	32

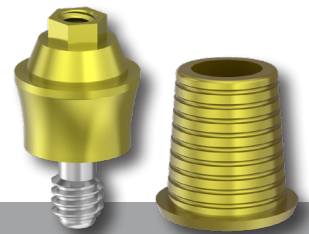


# TIB Software Selection



External Hex									
Scan flag	Digital lab analogue	Compatible implants	Main library selection	Secondary selection	Tertiary selection (Abutment code)	Retaining screw	TIB Sirona 3rd party software selection	Abutment block / scan body size	Screw torque value (Ncm)
SFT-EX-30	LAD-IP	MSC-IP-xx / IP-xx IVM-EX30-37xx / IV-EX30-37xx IVM-EX3012D-37xx / IV-EX3012D-37xx	Southern Implants External Hex	SI IP Narrow Ti-Base (TIBS) "SFT-EX-30"	TIBS-EX-30-C1.5 TIBS-EX-30-C3	TS-P-16	FX 3.8 S	S	25-32
SFT-EX-34	LAD-IBN	IBNxx MSC-IBNTxx / IBNTxx MSC-IBNT12D-xx / IBNT12D-xx MSC-IBR12D-xx / IBR12D-xx MSC-IBR24D-xx / IBR24D-xx MSC-IBR36D-xx / IBR36D-xx IV-EX35-45xx / IVM-EX35-45xx IV-EX3512D-45xx / IVM-EX3512D-45xx IV-EX40-50xx / IVM-EX40-50xx IV-EX4012D-50xx / IVM-EX4012D-50xx	Southern Implants External Hex	SI IBN Ti-Base (TIB) "SFT-EX-34"	TIB-EX-34 TIB-EX-34-C1.5 TIB-EX-34-C3 TIB-NX-34 TIB-NX-34-C1.5 TIB-NX-34-C3	TSHZ3/ TSSZ3/ TSUZ3	BO 3.4L	L	32-40
SFT-EX-40	LAD-IB	MSC-IBSxx / IBS-xx MSC-IBTxx / IBT-xx IETx / IET14 MSC-IBT12D-xx / IBT12D-xx MSC-BAR12D-xx / BAR12D-xx MSC-BAR24D-xx / BAR24D-xx MSC-BAR36D-xx / BAR24D-xx MSC-MAX-6-xx / MAX-6-xx ZYG-55-xxN ZYGAN-xx ZYGEX-xx ONC-55-xxN  Platform shifted: MSC-BAxx / BAxx MSC-BATxx / BATxx MSC-BAT12D-xx / BAT12D-xx MSC-MAX-7-xx / MAX-7-xx IV-EX52-60xx / IVM-EX52-60xx IV-EX5212D-60xx / IVM-EX5212D-60xx	Southern Implants External Hex	SI IB Ti-Base (TIB) "SFT-EX-40"	TIB-EX-40 TIB-EX-40-C1.5 TIB-EX-40-C3 TIB-NX-40 TIB-NX-40-C1.5 TIB-NX-40-C3	TSHZ3/ TSSZ3/ TSUZ3	BO 4.1L	L	32-40
SFT-EX-50	LAD-BA	MSC-BAxx / BAxx MSC-BATxx / BATxx MSC-BAT12Dxx / BAT12Dxx MSC-MAX-7-xx / MAX-7-xx  Platform shifted: BBBTxx BBBT12Dxx BBBT24Dxx MSC-MAX-8-xx / MAX-8-xx	Southern Implants External Hex	SI BA Ti-Base (TIB) "SFT-EX-50"	TIB-EX-50 TIB-EX-50-C1.5 TIB-EX-50-C3 TIB-NX-50 TIB-NX-50-C1.5 TIB-NX-50-C3	TSHZ3/ TSSZ3/ TSUZ3	BO 5.0L	L	32-40
SFT-EX-60	LAD-BBB	BBBTxx BBBT12Dxx BBBT24Dxx MSC-MAX-8-xx / MAX-8-xx	Southern Implants External Hex	SI BBB Ti-Base (TIB) "SFT-EX-60"	TIB-EX-60 TIB-EX-60-C1.5 TIB-EX-60-C3 TIB-NX-60 TIB-NX-60-C1.5 TIB-NX-60-C	TSHZ3/ TSSZ3/ TSUZ3	NB RS 6.0L	L	32-40

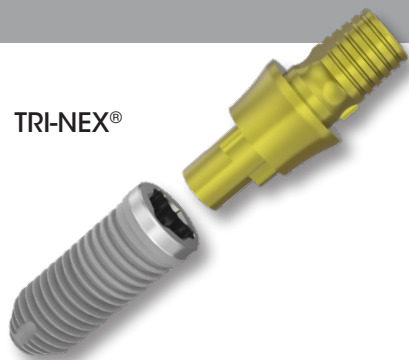
# TIB Software Selection



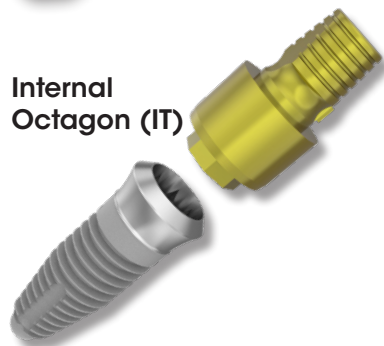
## Compact Conicals (MC)

Scan flag	Digital lab analogue	Compatible implants	Main library selection	Secondary selection	Tertiary selection (Abutment code)	Retaining screw	Screw torque value (Ncm)
SFT-MC-48	LAD-MC	<p>External Hex:</p> <p>APMC-x ABNMCZx ABNMC17D AMCZx AMC17D-3 AMC30D-4 MC-ZYG-xx ABAMC17D-3 ABAMC30D-4</p> <p>Single Platform (SP1):</p> <p>MC-SP-x.x MC-SP-17D-x.x MC-SP-30D-x</p> <p>Internal Hex (M-series):</p> <p>MC-M-x MC-M-20D MC-M-30D</p> <p>PROVATA®:</p> <p>MC-3M-x MC-3M-20D MC-M-x MC-M-20D MC-M-30D MCN-Z-x</p> <p>Deep Conical (DC):</p> <p>MC-DC3-x MC-DC3-20D MC-DC3-30D MC-DC4-x MC-DC4-20D MC-DC4-30D MCN-DC5-x</p> <p>TRI-NEX®:</p> <p>MC-L-35-x MCL-35-17Dx MC-L-43-x MCL-43-17Dx MCL-43-30D-4 MCN-L-50-x</p>	Southern Implants Compact Conical (MC)	SI MC 48 Ti-Base (TIB) "SFT-MC-48"	TIB-MC-48	TSH1/ TSS1/ TSU1	10-15
SFT-MC-60	LAD-MCW	<p>External Hex:</p> <p>ABAMCZxx ABBBMCZx ABBBMC17D-3 ABBBMC30D-4</p> <p>PROVATA®:</p> <p>MC-Z-x</p> <p>TRI-NEX®:</p> <p>MC-L-50-x</p> <p>Deep Conical (DC):</p> <p>MC-DC5-x</p>	Southern Implants Compact Conical (MC)	SI MC 60 Ti-Base (TIB) "SFT-MC-60"	TIB-MC-60	TSH1/ TSS1/ TSU1	10-15

TRI-NEX®



Internal  
Octagon (IT)



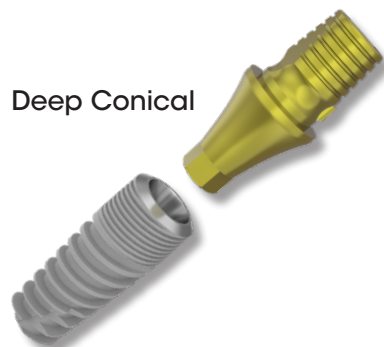
PROVATA®



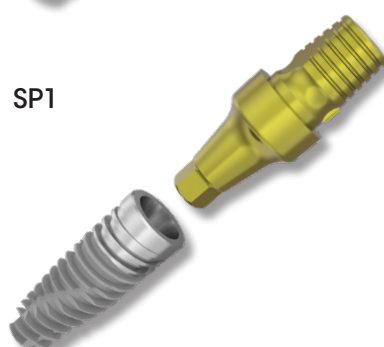
Internal Hex  
(M-Series)



Deep Conical



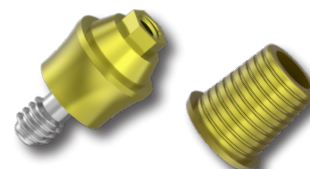
SP1



External Hex



Compact Conical



## Versatility Across All Southern Implants Connections

Our TIB Abutments are available for all 7 Southern Implants connections and our compact conical abutments, ensuring seamless integration and flexibility across a wide range of implant systems.



For more information scan the below



to contact your Southern Implants Representative  
or visit [southernimplants.com](http://southernimplants.com)



**South Africa - Headquarters** 1 Albert Road, Irene, RSA  
T: +27-12-667-1046 | E: [info@southernimplants.com](mailto:info@southernimplants.com)

**EC REP**

Southern Implants Europe AB Holmgatan 30, S-791 71, Falun, Sweden  
E: [ecrep@southernimplants.com](mailto:ecrep@southernimplants.com)

#### Subsidiaries

##### Australia

Southern Implants Australia  
T: +61-2-8076-9337  
E: [info@southernimplants.com.au](mailto:info@southernimplants.com.au)

##### Spain and Portugal

Southern Implants Ibérica  
T: +34 935 053 507  
E: [info@southernimplants.com.es](mailto:info@southernimplants.com.es)

##### United Kingdom and Ireland

Southern Implants UK  
T: +44-20-8899-6845 / 6 / 7  
E: [info@southernimplants.com.uk](mailto:info@southernimplants.com.uk)

##### USA and Canada

Southern Implants North America Inc.  
T: +1-561-472-0990  
E: [customer care@southernimplants.com](mailto:customer care@southernimplants.com)

**Southern Implants® are distributed world-wide, please visit [southernimplants.com](http://southernimplants.com) for a list of Distributors.  
For the latest and full assortment of Southern Implant products, visit our current resources library at [southernimplants.com](http://southernimplants.com).**