

ZYGAN® and ZYGEX Bone Mill Fixture Mount

THE CHALLENGE

During placement of Zygomatic implants, to achieve the correct restorative positioning and orientation, the prosthetic emergence of the implant can be impeded by the alveolar bone. A solution is required to ensure ease of restorative access as well as allowing the Zygomatic implant to progress into the alveolar bone whilst still preserving the alveolar ridge.

THE INNOVATION

The new ZYGAN® and ZYGEX 'Bone Mill Fixture Mount' aims to provide a multipurpose function where it performs as both the fixture mount required for insertion as well as a bone mill to prep the alveolar bone for abutment seating. The 'Bone Mill Fixture Mount' is enhanced with cutting edges which engage the alveolar bone at time of insertion.

In occasions, abutments or prostheses do not want to seat due to contact with bone adjacent to the head of the implant. Time is wasted in trying to remove the impinging bone with chisels or round burs and could potentially damage the head of the implant. The advent of bone mills resolves this problem. Bone mills are indicated to remove bone coronally in situations where the bone walls interfere with the seating of abutment or the emergence profile of the prosthesis.

NOTE: all ZYGAN® and ZYGEX implants will be repackaged and reassembled with the new 'Bone Mill Fixture Mount' onwards from date of this notification.

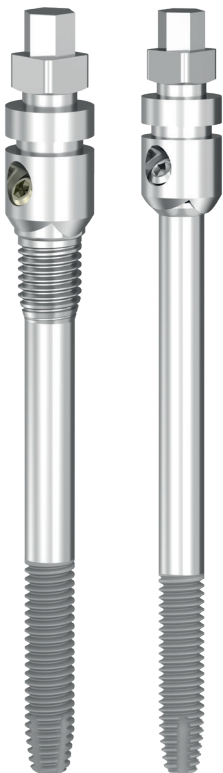


Figure 1:
ZYGAN® and ZYGEX
implants assembled
with the standard fixture
mount.

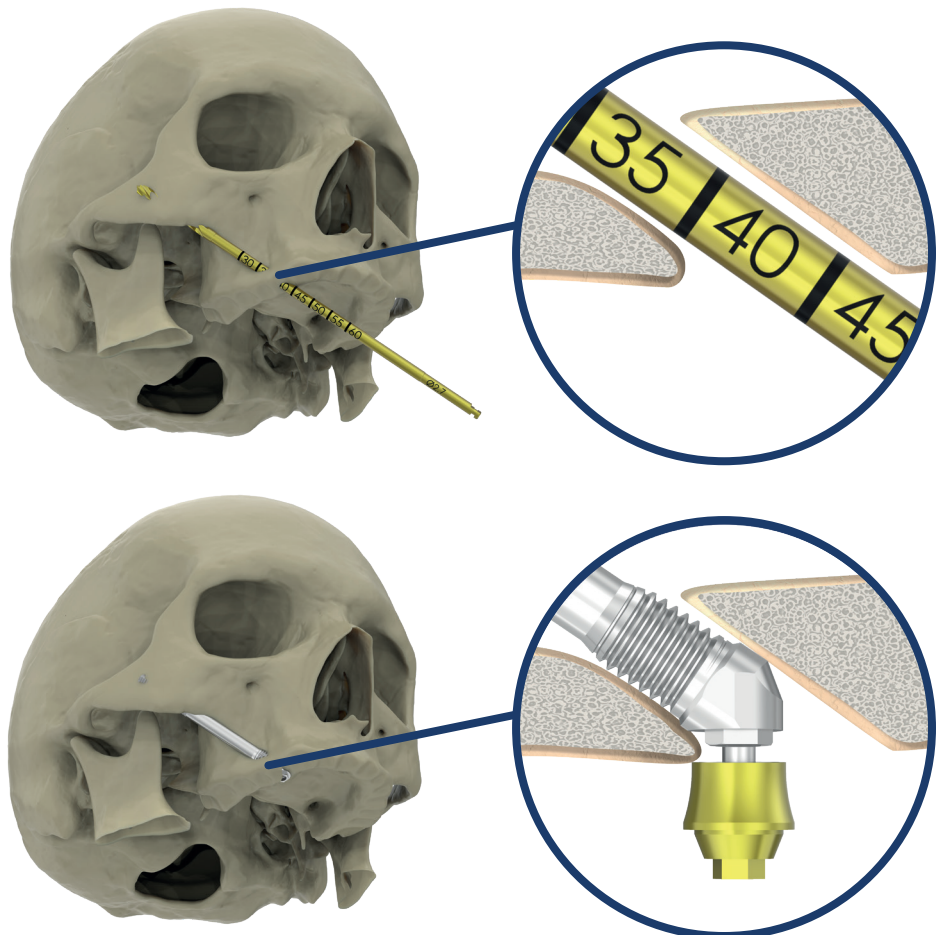


Figure 2:
Drilling protocol prepares the alveolar bone in the same axis of the implant insertion
preventing the seating of the abutment.

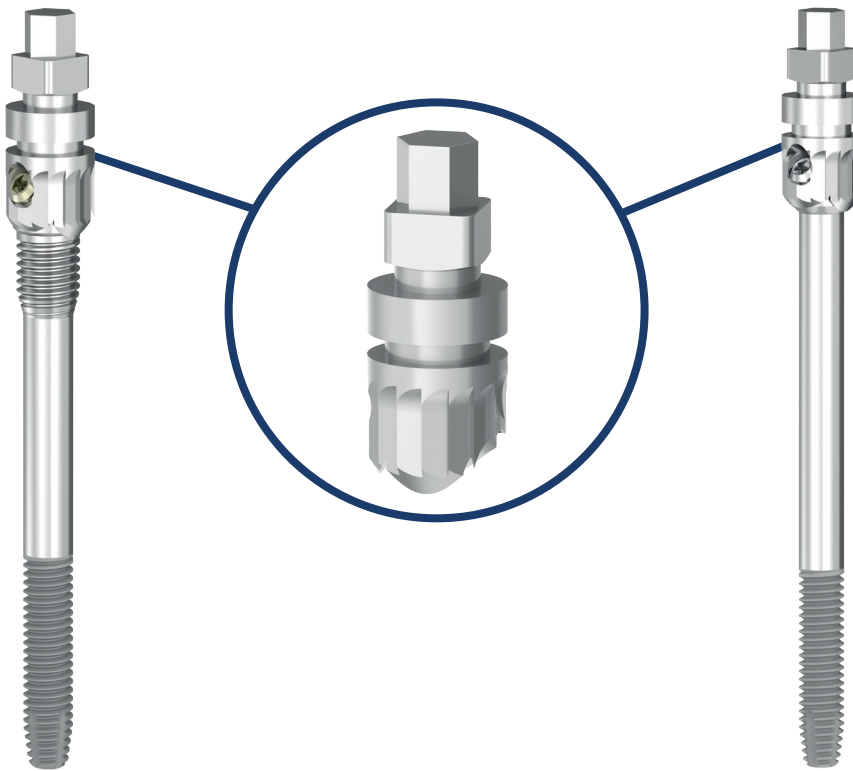


Figure 3:
ZYGAN® and ZYGEX implants assembled with the new
'Bone Mill Fixture Mount'.

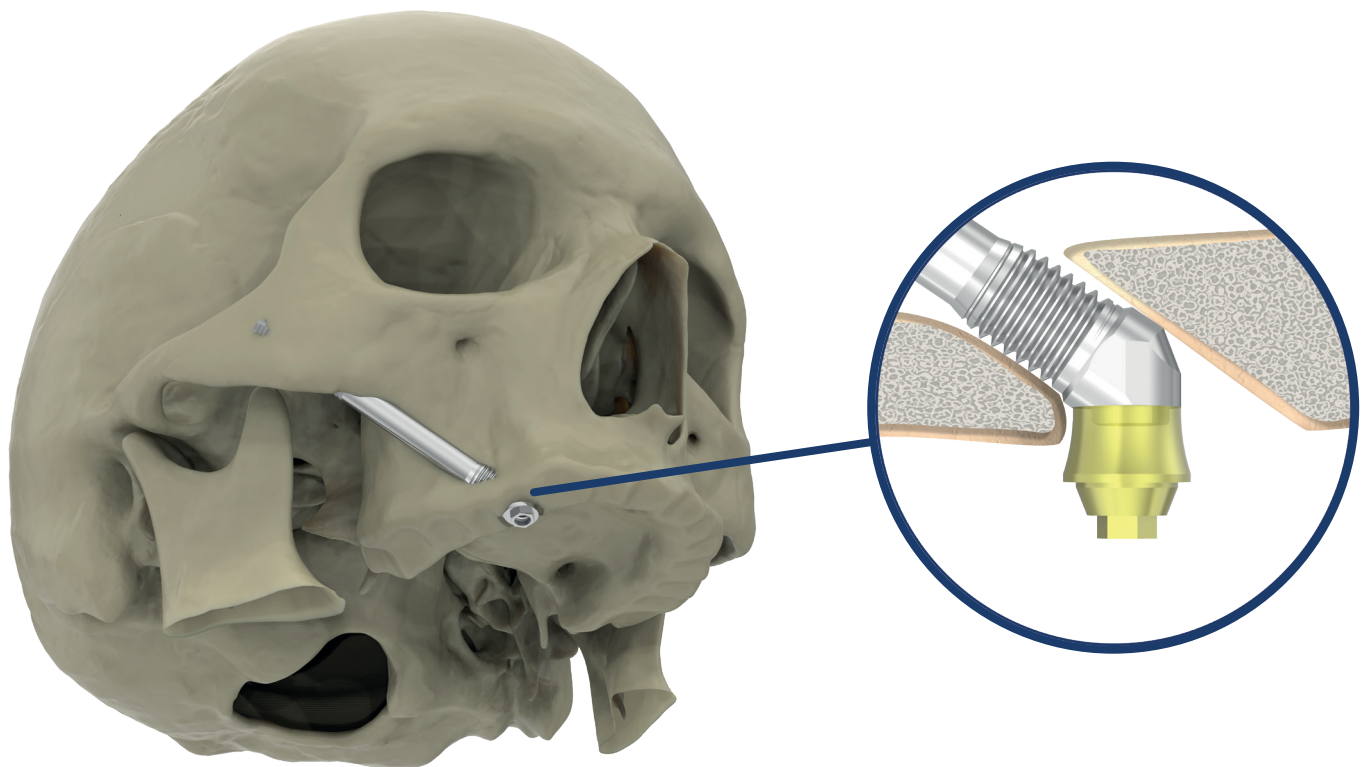


Figure 4:
ZYGAN® implant placed in a ZAGA 3 with new 'Bone Mill Fixture Mount'.

Images are for illustration purposes only and do not necessarily accurately represent the product. Not all products are cleared for sale in all countries.

SOUTHERNIMPLANTS.COM