

## PROVATA® Ø3.3 mm Implants

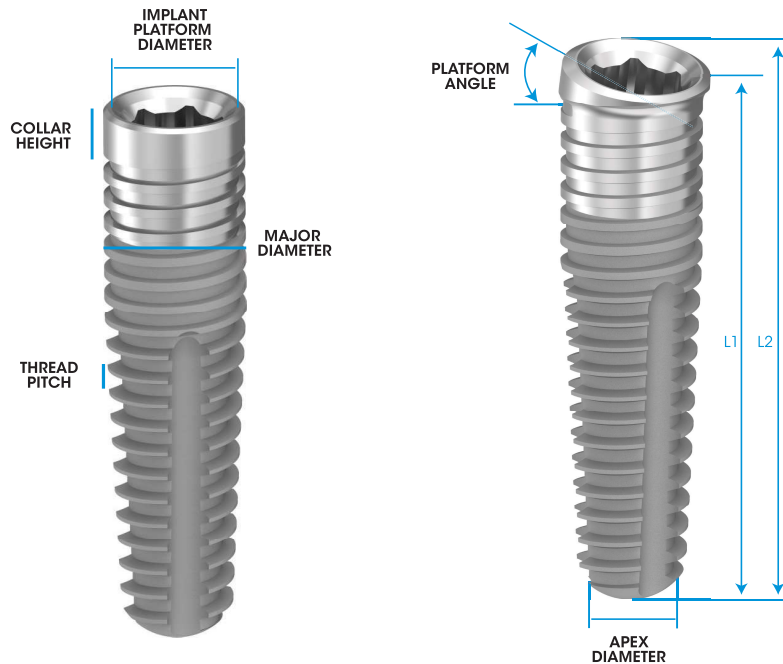
The PROVATA® implant is the combination of 2 proven designs: external hex body with an internal hex connection. The same implant body shape and thread as the external hex allows the same surgical kit and site preparation sequence to be utilised. Due to the increased demand for a narrow Ø3.3 mm implant for patients that present with a narrow edentulous space or a narrow horizontal alveolar crest, the PROVATA® range has been extended.

### Implant Dimensions and Information




RANGE	MAJOR DIAMETER	IMPLANT PLATFORM DIAMETER	PROSTHETIC DIAMETER	PROSTHETICS	HEX WIDTH (across flats)	COLLAR HEIGHT	THREAD PITCH	APEX DIAMETER	PLATFORM ANGLE
● MSC-PRO3xx	Ø3.3 mm	3.30	3.10	2.9	● 2.10	0.6	0.6	2.6	0
● MSC-PRO3xxNF	Ø3.3 mm	3.30	3.10	2.9	● 2.10	0.6	0.6	2.6	0
● MSC-PRO12D3xx	Ø3.3 mm	3.30	3.10	2.9	● 2.10	0.6	0.6	2.6	12°

**NOTE:**

- only available in MSC variants.
- regular implants supplied with or without a multipurpose fixture mount. (NF) in code indicates with no fixture mount.

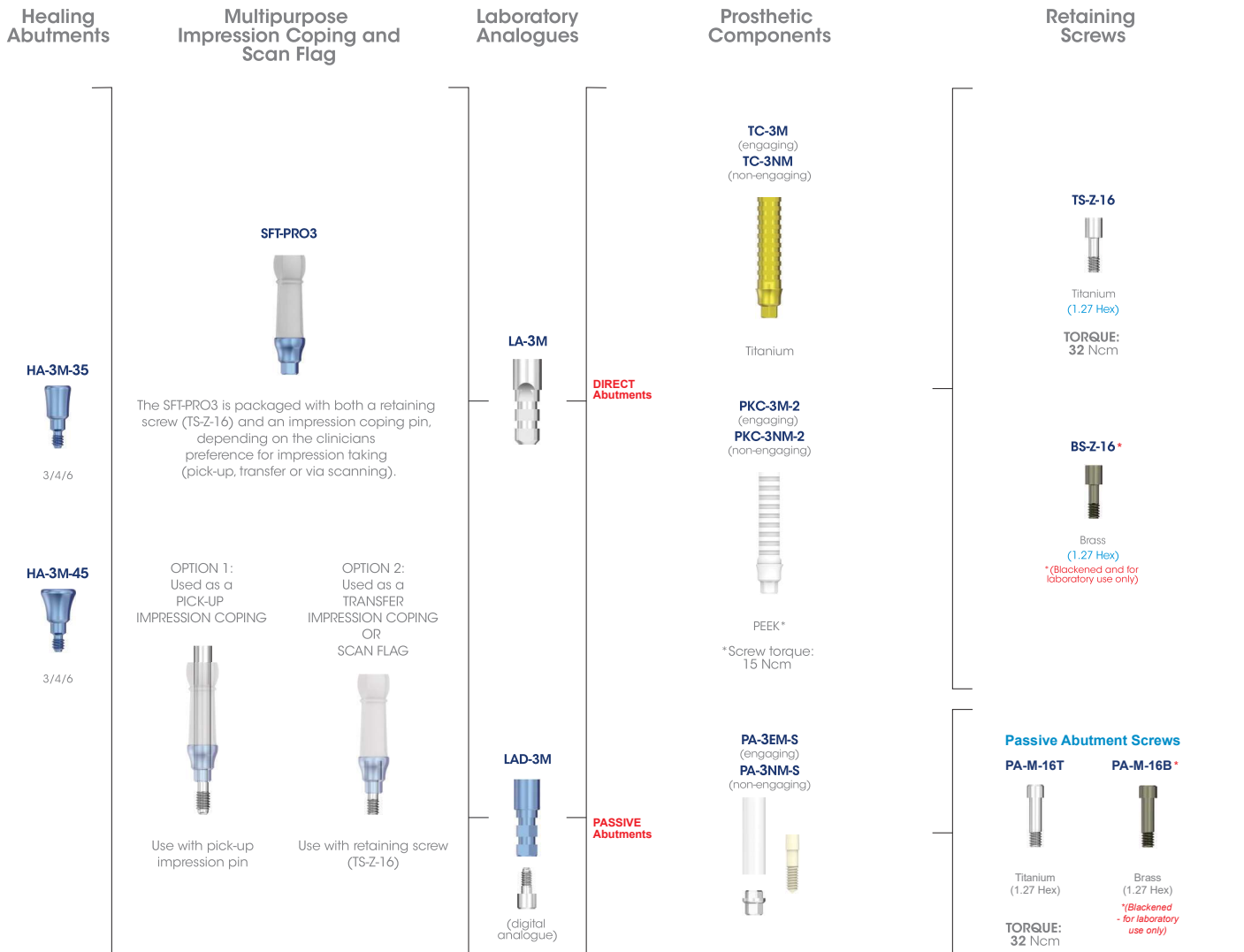


### Implants are available in lengths of:

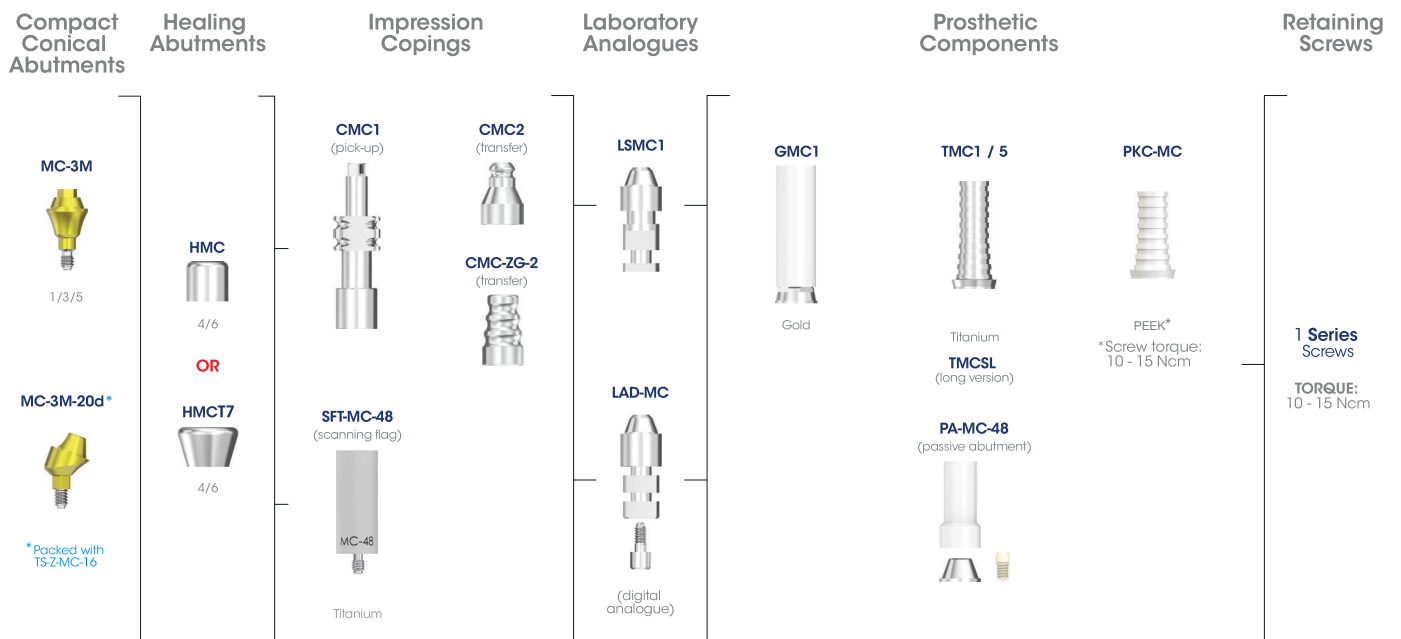
ITEM CODE MSC-TAPERED (with multipurpose fixture mount)	ITEM CODE MSC-TAPERED (without fixture mount)	IMPLANT LENGTHS (in mm)	 (with multipurpose fixture mount)	 (without fixture mount)	ITEM CODE MSC-TAPERED (with standard fixture mount)	IMPLANT LENGTHS (in mm)		 (premounted with standard fixture mount)
						L1	L2	
MSC-PRO308	MSC-PRO308NF	8.5			MSC-PRO12D308	8.5	8.8	
MSC-PRO310	MSC-PRO310NF	10			MSC-PRO12D310	10	10.3	
MSC-PRO311	MSC-PRO311NF	11.5			MSC-PRO12D311	11.5	11.8	
MSC-PRO313	MSC-PRO313NF	13			MSC-PRO12D313	13	13.3	
MSC-PRO315	MSC-PRO315NF	15			MSC-PRO12D315	15	15.3	
MSC-PRO318	MSC-PRO318NF	18			MSC-PRO12D318	18	18.3	

Prosthetic Flowchart

Direct



INDIRECT



Site Preparation Sequence

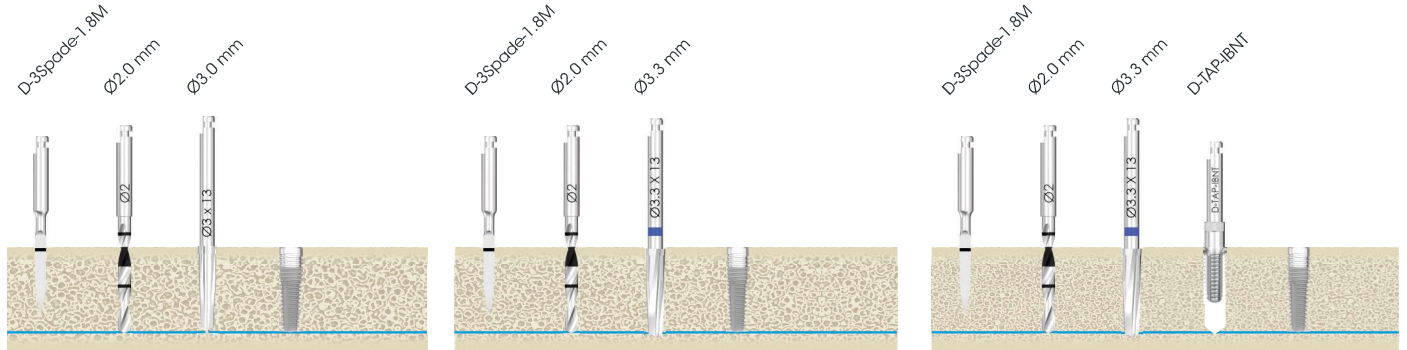
Ø3.3 mm Tapered (MSC-PRO3)

(illustrations are for 13 mm implants)

Soft Bone

Medium Bone

Dense Bone



NOTE: site preparation sequence recommended by Southern Implants does not replace the judgement and experience of the surgeon.

Compatible prosthetic drivers

1.22 mm / 1.27 mm universal drivers



IHD-22U-L

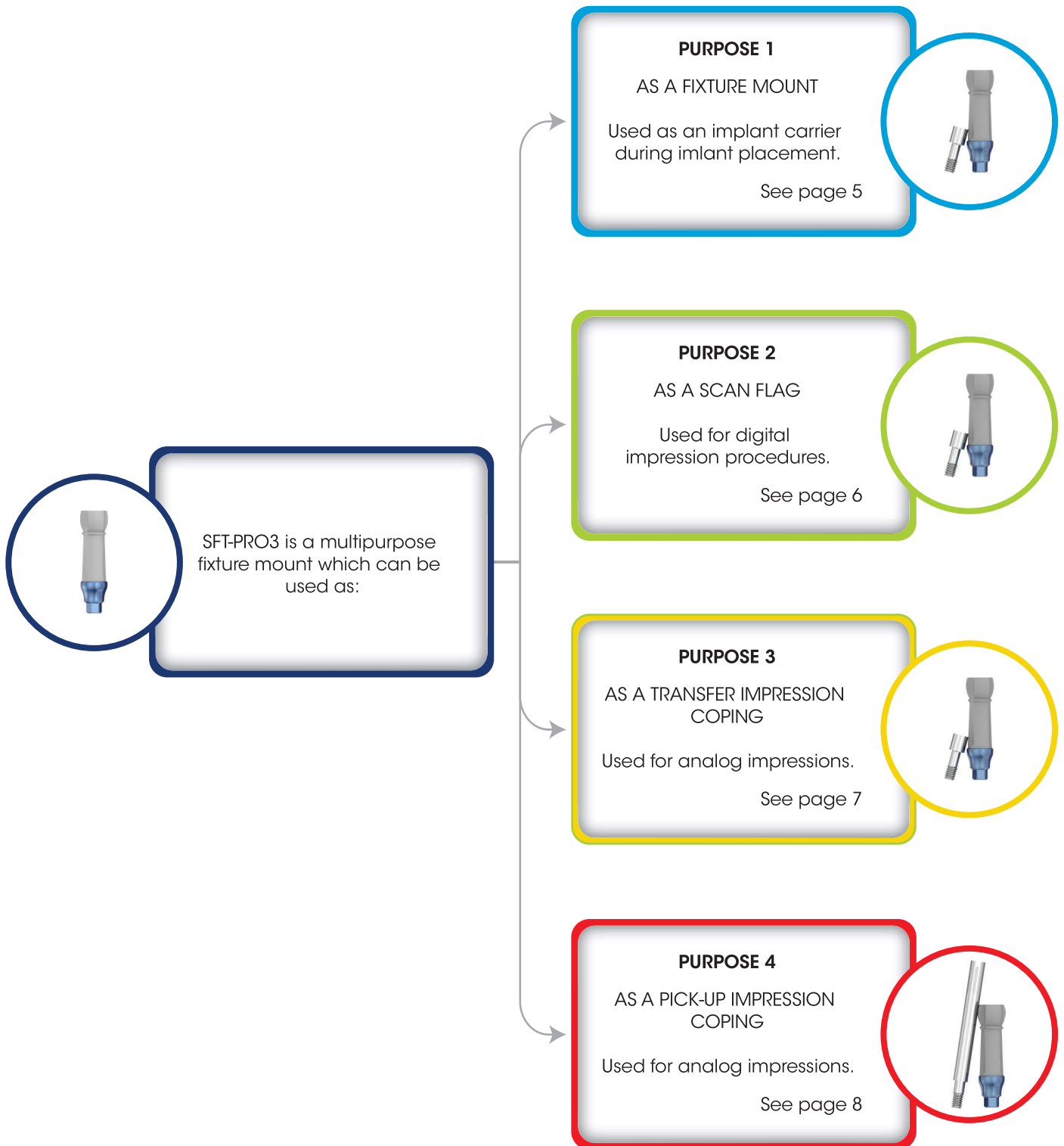


IHD-22U-M



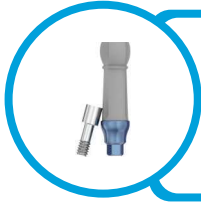
IHD-22U-S

SFT-PRO3 Multipurpose Fixture Mount



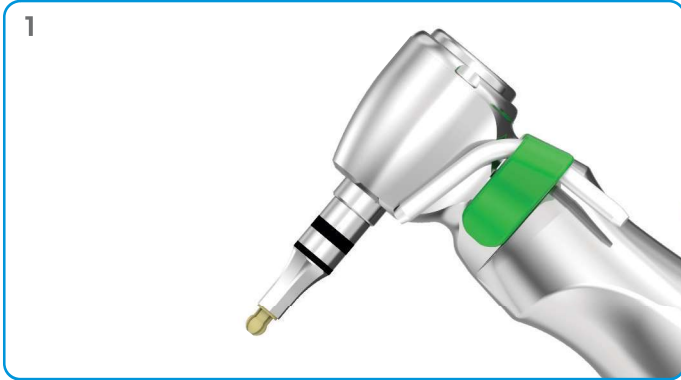
**NOTE:**

- the regular PRO3 implant is supplied with or without a scan flag fixture mount. (NF) in code indicates without a fixture mount.
- the Co-Axis® PRO3 implants use standard fixture mounts (NOT multipurpose).
- the SFT-PRO3 can be ordered separately and is packaged with both a retaining screw (TS-Z-16) and an impression coping pin, depending on the clinician's preference for impression taking (pick-up, transfer or via scanning).
- before placing the multipurpose fixture mount ensure all items are clean and suitable for intraoral use.



**PURPOSE 1:**  
Used as a fixture mount

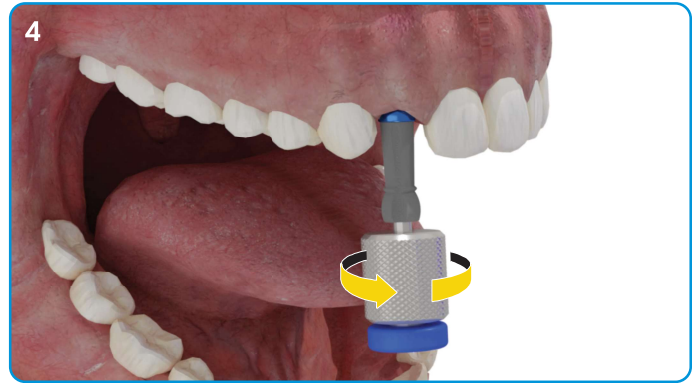
(for implant insertion of regular implants only)



1. Connect the handpiece insertion tool I-HM-GS or I-HM-M/L to the handpiece (see CAT-8056).

2. Engage the internal hex of the multipurpose fixture mount with the insertion tool and carefully remove the implant fixture mount assembly from the sterile vial.

**NOTE:** the hexagon of the insertion tool in the multipurpose fixture mount must be fully engaged before torque is applied, to prevent any damage. The hexagon is fully engaged when the regular portion of the hexagon tool is almost completely sunken in the multipurpose fixture mount.

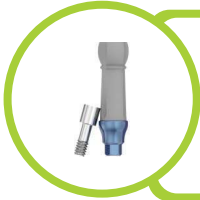


3. Insert the implant at 15 - 20 rpm while applying downward pressure

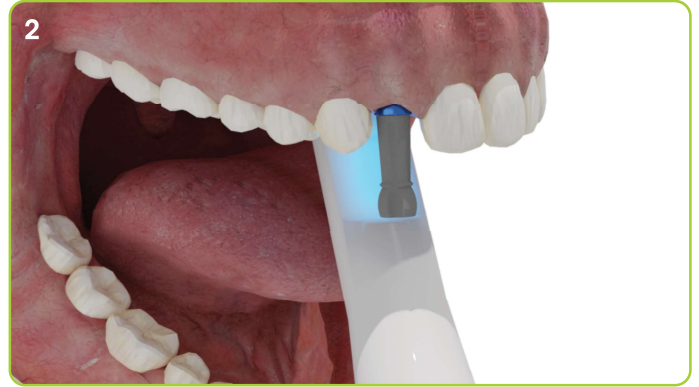
4. Once the implant is placed to the desired depth, remove the multipurpose fixture mount by loosening the screw using the applicable driver.

**NOTE:**

- there are dedicated insertion tools (i.e I-H3M-M/L or I-WI-3M-S/M/L) should the user wish to place a regular PRO3 implant without a fixture mount.
- the standard insertion tools (I-HM-S/M/L or I-WI-M-S/M/L) are to be used at fixture mount-level for both the regular and Co-Axis PRO3 implants.



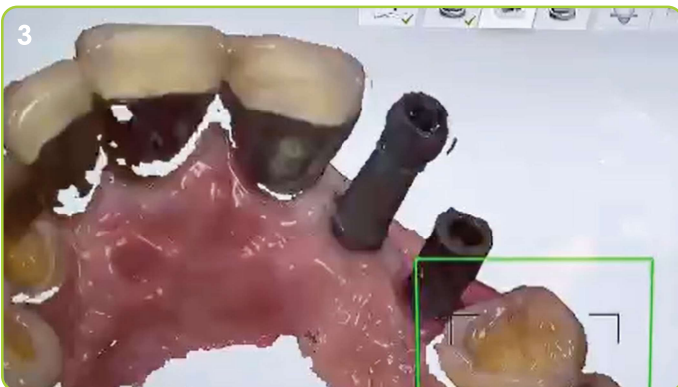
**PURPOSE 2:**  
**Used as a scan flag**  
(for digital impressions)



1. Attach the matching multipurpose fixture mount to the dental implant or lab analogue using the retaining screw (TS-Z-16). Check proper fit and hand tighten the screw with the appropriate driver. The seating of the multipurpose fixture mount must be verified before intraoral scanning procedures by an X-ray.

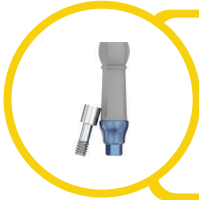
2. The patient is scanned using an intraoral scanner or digitalisation at the model phase can occur if the laboratory model is scanned using a desktop scanner.

**NOTE:** follow the instructions for use which are supplied by the scanner manufacturer for both handling of the scanning device as well as scanning procedures.

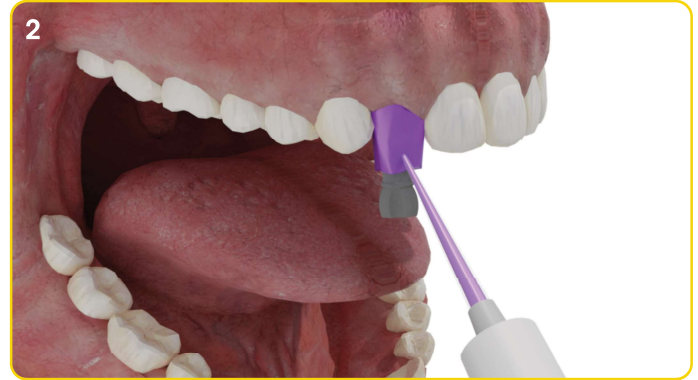


3. Follow the recommended scanning protocol as set out by the scanning device operating manual. Take special care to capture the top third of the scan flag fully. This area is the "alignment zone" needed to match the scan flag to its digital counterpart within the SIDIGITAL libraries for 3Shape, Exocad and Dental Wings. (SIDIGITAL libraries are available for download at [southernimplants.com](http://southernimplants.com).)





**PURPOSE 3:**  
**Used as a transfer impression coping**  
 (closed tray technique)

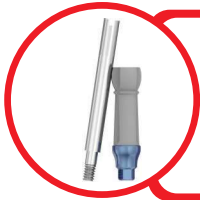


1. Screw the multipurpose fixture mount into the implant using the retaining screw (TS-Z-16). Should the implant in use already have a multipurpose fixture mount, ensure that the retaining screw is tightened before proceeding to the next step. Check proper fit and hand tighten the screw with the appropriate driver.
2. Ensure that the impression material surrounds the multipurpose fixture mount to verify an accurate representation of the tissue profile. Use either a custom or stock tray (there is no need to cut an opening into the tray as this is a closed tray technique).

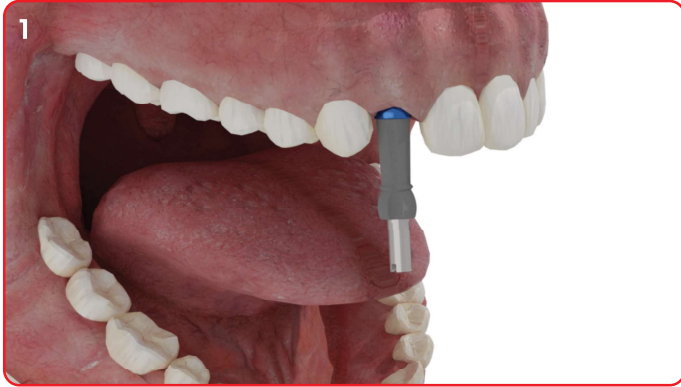


3. Fill the impression tray with impression material and take the impression.
4. Once the impression material has set, remove the impression from the patient's mouth. If multiple implants are being restored, remove one multipurpose fixture mount at a time from the patient and insert it into the correlating position in the impression tray. Proceed with restoration procedure as deemed necessary.

**NOTE:** it is important to place the multipurpose fixture mount into the same opening in the material as it was orientated in the mouth.

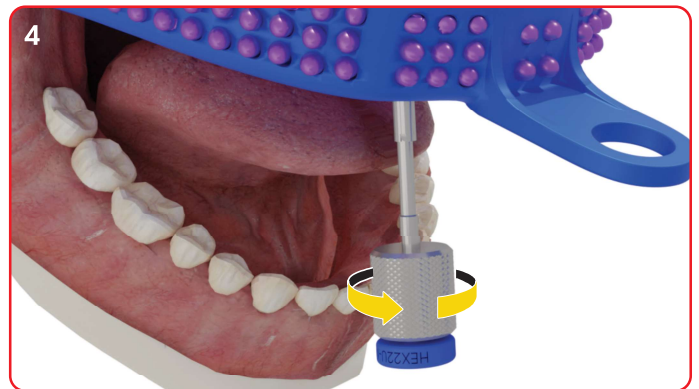


**PURPOSE 4:**  
**Used as a pick-up impression coping**  
(open tray technique)



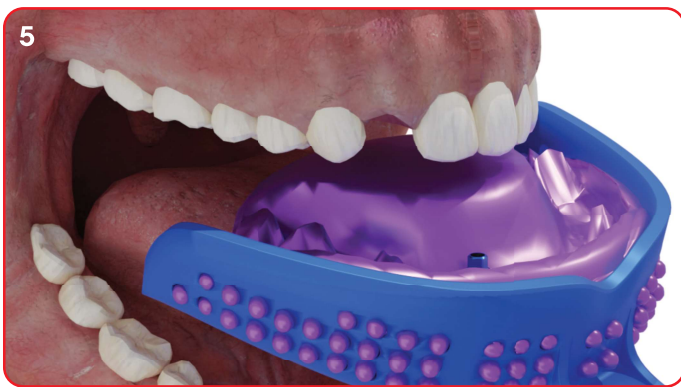
1. Screw the multipurpose fixture mount into the implant using the impression pin packaged with the SFT-PRO3. Check proper fit and hand tighten the screw with the appropriate driver.

2. Ensure that the impression material surrounds the multipurpose fixture mount to verify an accurate representation of the tissue profile.



3. Use either a custom or stock tray (cut an opening into the tray as this is an open tray technique). Fill the impression tray with impression material and take the impression.

4. Once the impression material has set, remove the impression pin from the patient's mouth by unscrewing the impression pin and removing it.



5. Remove the impression tray (containing the multipurpose fixture mount). Proceed with restoration procedure as deemed necessary.

To learn more visit our website or scan the below link to watch a video about the PRO3 Multipurpose Fixture Mount.

