

SIDIGITAL Library

3Shape Installation instructions

Download & Install the Southern Implants 3Shape library in 3 Simple Steps

STEP 1

**LOG INTO
SIDIGITAL PAGE**

STEP 2

**DELETE OLD
LIBRARIES**
(FOR EXISTING USERS ONLY)

STEP 3

**INSTALL NEW
SIDIGITAL LIBRARY**

STEP 1

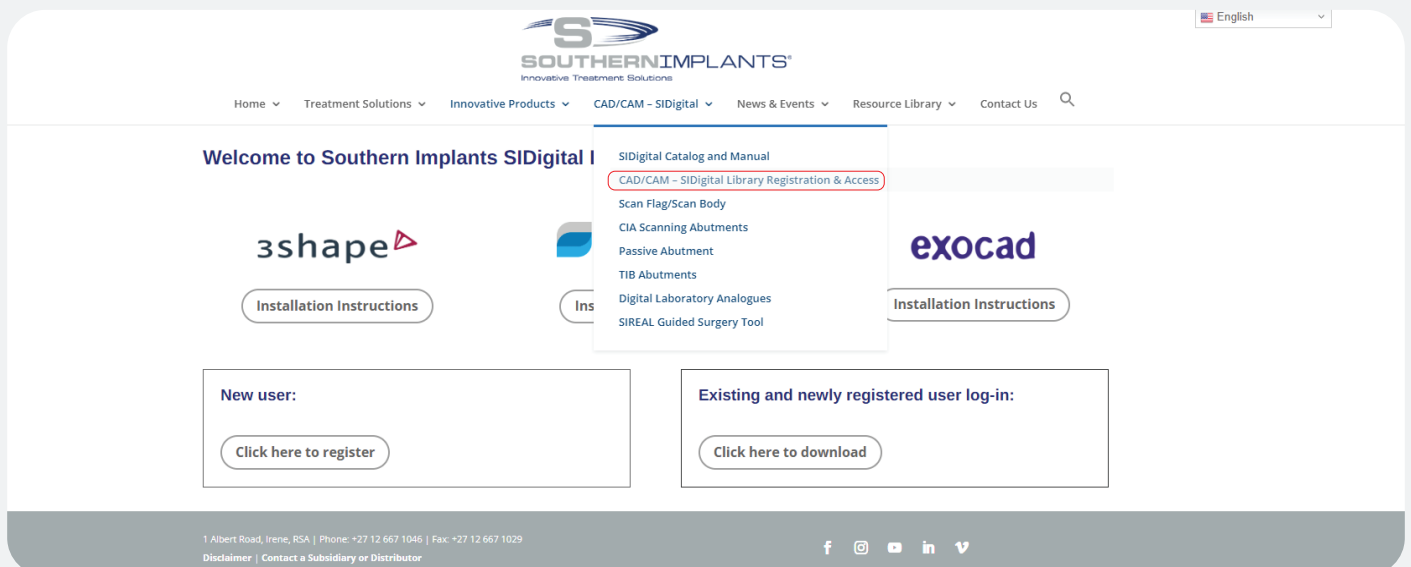
STEP 1.1

Navigate to the CAD/CAM - SIDIGITAL page

Click [here](#) to go to the library registration page

Or

Visit southernimplants.com and navigate to the webpage by hovering over the CAD/CAM - SIDIGITAL tab on the menu bar and click on "CAD/CAM – SIDigital Library Registration & Access".



The screenshot shows the Southern Implants website. The top navigation bar includes links for Home, Treatment Solutions, Innovative Products, CAD/CAM - SIDigital, News & Events, Resource Library, and Contact Us. The CAD/CAM - SIDigital menu is open, showing options like SIDigital Catalog and Manual, CAD/CAM - SIDigital Library Registration & Access (highlighted), Scan Flag/Scan Body, CIA Scanning Abutments, Passive Abutment, TIB Abutments, Digital Laboratory Analogues, and SIREAL Guided Surgery Tool. Below the menu, there are sections for 'New user:' with a 'Click here to register' button, and 'Existing and newly registered user log-in:' with a 'Click here to download' button. The footer contains contact information and social media links.

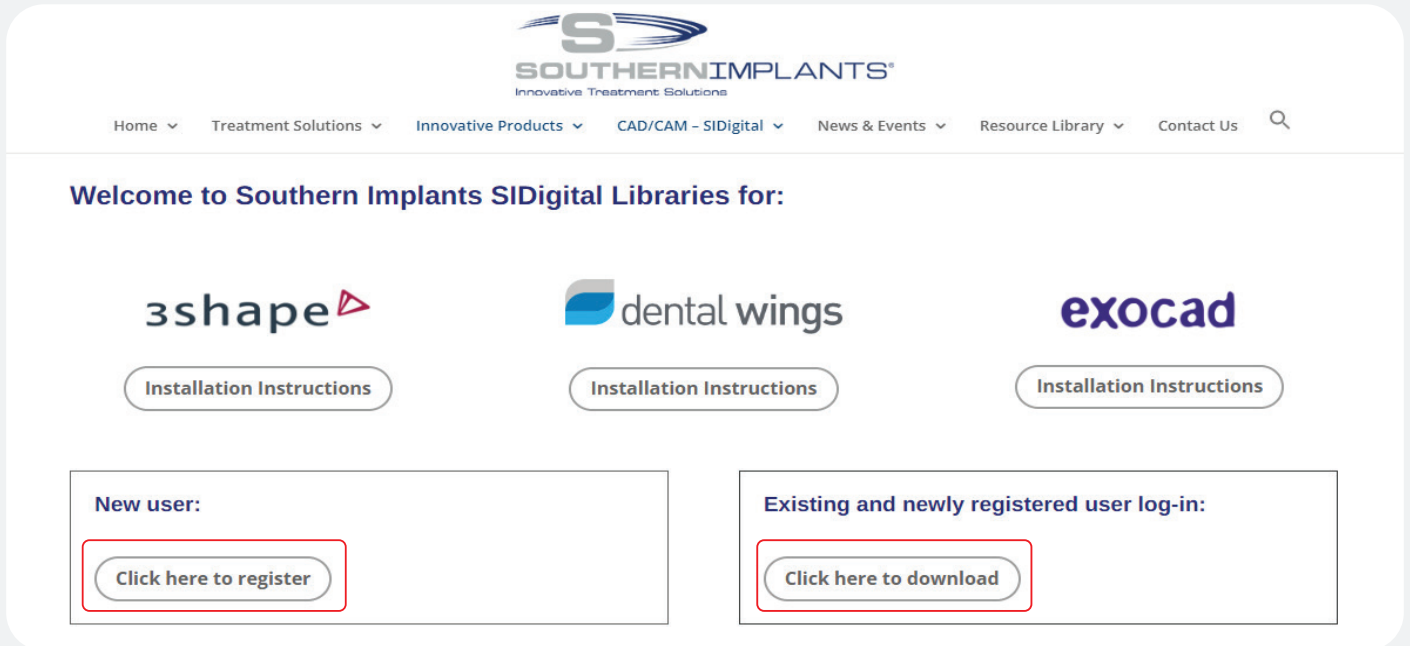
STEP 1.2
Create new account / log-in

FOR NEW USERS

Create an account by clicking
"Click here to register".

FOR EXISTING USERS


Navigate to the log in screen by clicking
"Click here to download".





SOUTHERNIMPLANTS®
Innovative Treatment Solutions

Home ▾ Treatment Solutions ▾ Innovative Products ▾ CAD/CAM – SIDigital ▾ News & Events ▾ Resource Library ▾ Contact Us 🔍

Welcome to Southern Implants SIDigital Libraries for:


[Installation Instructions](#)


[Installation Instructions](#)


[Installation Instructions](#)

New user:

[Click here to register](#)

Existing and newly registered user log-in:

[Click here to download](#)

Complete and submit the form. A confirmation email with your login details will follow, check junk folder if not received within 48 hours. Navigate to the login page by clicking the link in the email or by navigating back to <https://southernimplants.com/cad-cam-download/>

From: sidigital@southernimplants.com
Sent:
To:
Subject: SI Digital Library Login Details

Good day,

Thank you for registering to SIDigital. To download, click on this link [Access SIDigital](#)

Username:
Password:

Kind regards,
SI Digital Team

Enter your password and email address
(remember to complete the CAPCHA verification)


Log in to download CAD/CAM libraries:

This content is password protected. To view it please enter your password below:

>> [Forgot password?](#)

Email:


Password:

☐ I'm not a robot 
reCAPTCHA
Privacy - Terms

STEP 1.3 Download 3Shape Library

There are three libraries available.

- 3Shape USA Encrypted:** this library is available for our users in the USA.
- 3Shape:** all other 3Shape users to Download latest version.
- 3Shape Archived:** versions prior to 2020 are available for download here.


English

Home Treatment Solutions Innovative Products CAD/CAM – SiDigital News & Events Resource Library Contact Us

Download SiDigital Libraries


Please choose your software:

For any queries, contact: sidigital@southernimplants.com




3 Shape
USA Encrypted

Download latest version




3 Shape

Download latest version



Dental Wings

Download latest version



Exocad

Download latest version


3 Shape USA Encrypted Change Log

3 Shape Change Log

Dental Wings Change Log

Exocad Change Log

CAD/CAM Archives



Revision 3: 8 March 2019

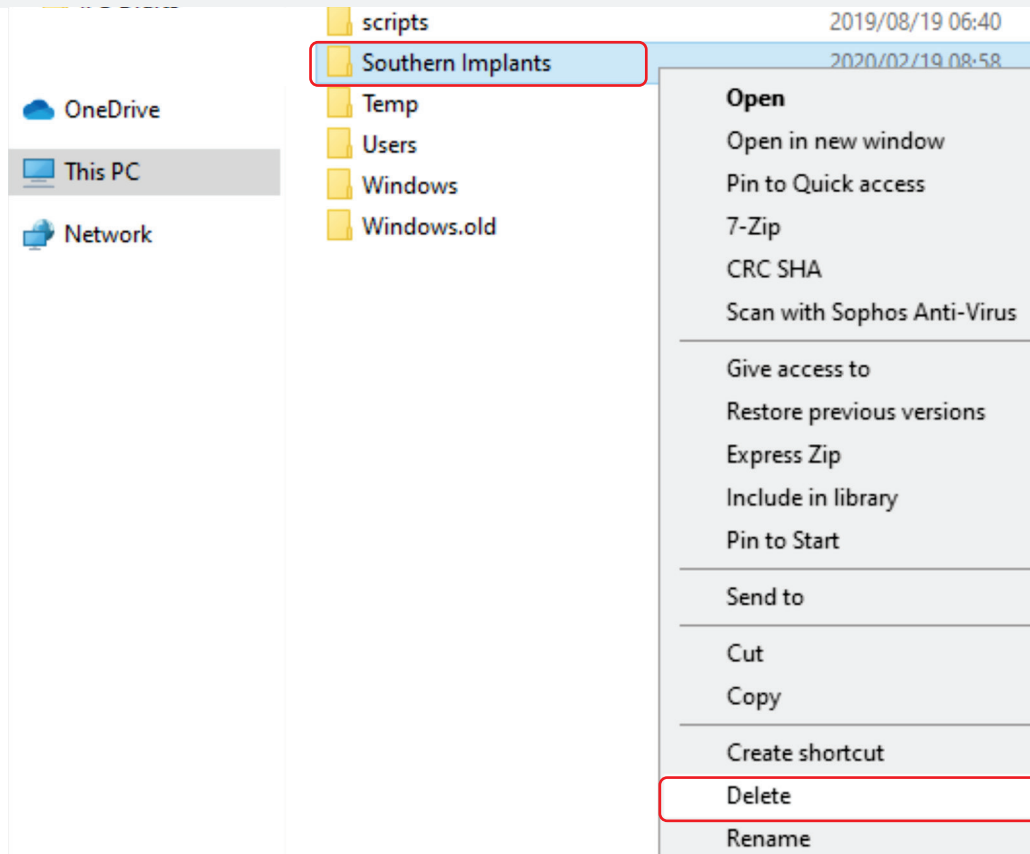
NOTE: a change-log is available of all revision changes to the library at the bottom of the screen.

STEP 2 DELETING YOUR PREVIOUS LIBRARY

(FOR EXISTING USERS ONLY)

STEP 2.1 Navigate to the directory of the old Southern Implants library

Navigate to the file location where the last 3Shape library was saved on your local hard drive
(Default location is the C:\ drive directory)
and delete the existing library.



For instances where the previous library was installed in a different location, it is essential that the user navigates to the correct directory and delete the library.

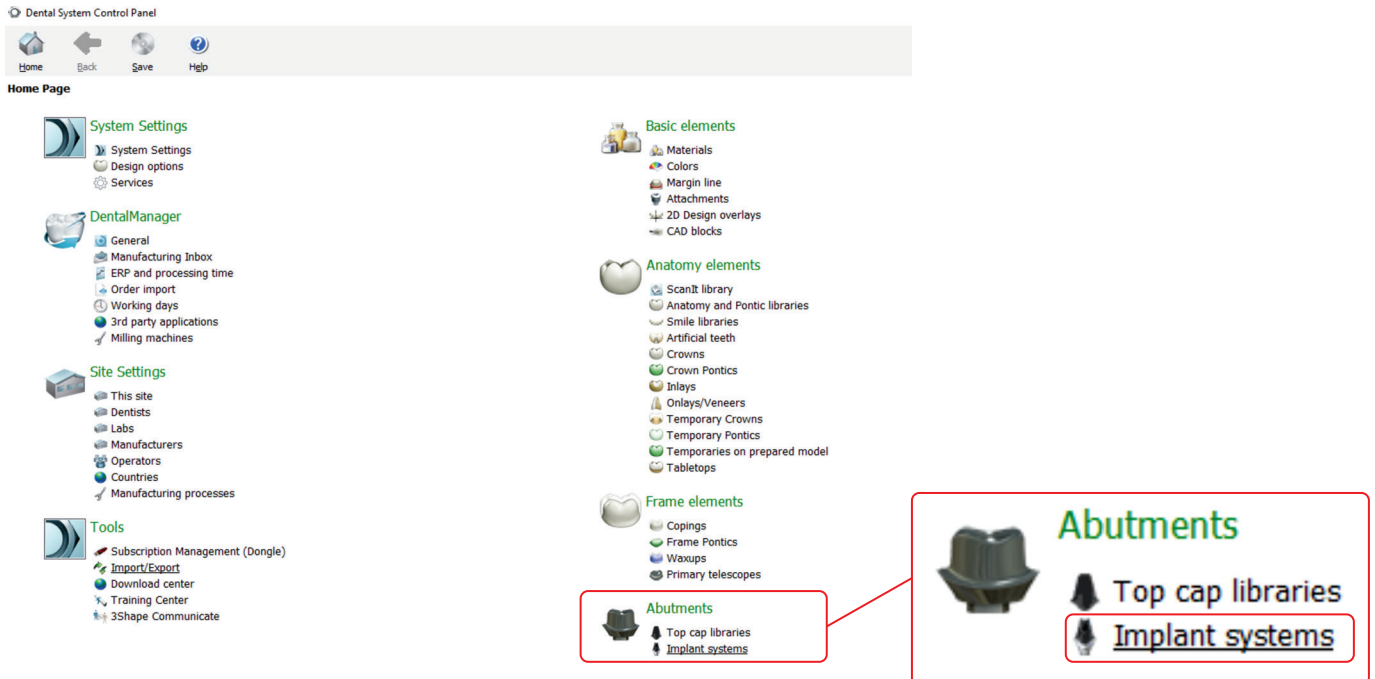
STEP 2.2 Open 3Shape's Control Panel in Dental Systems



STEP 2.3

Navigate to the Implant system button

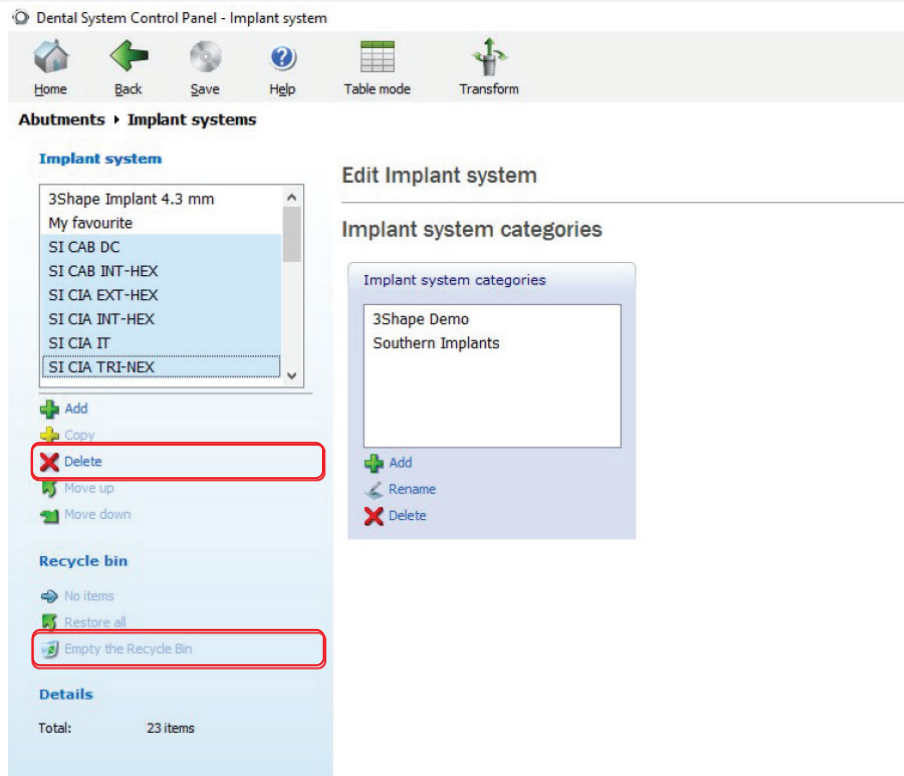
Within the control panel menu, click on 'Implant systems' under the Abutment header.



STEP 2.4

Deleting the Southern Library in 3Shape

Highlight the Southern Implants (SI) library and click 'Delete'. Then empty the recycle bin.



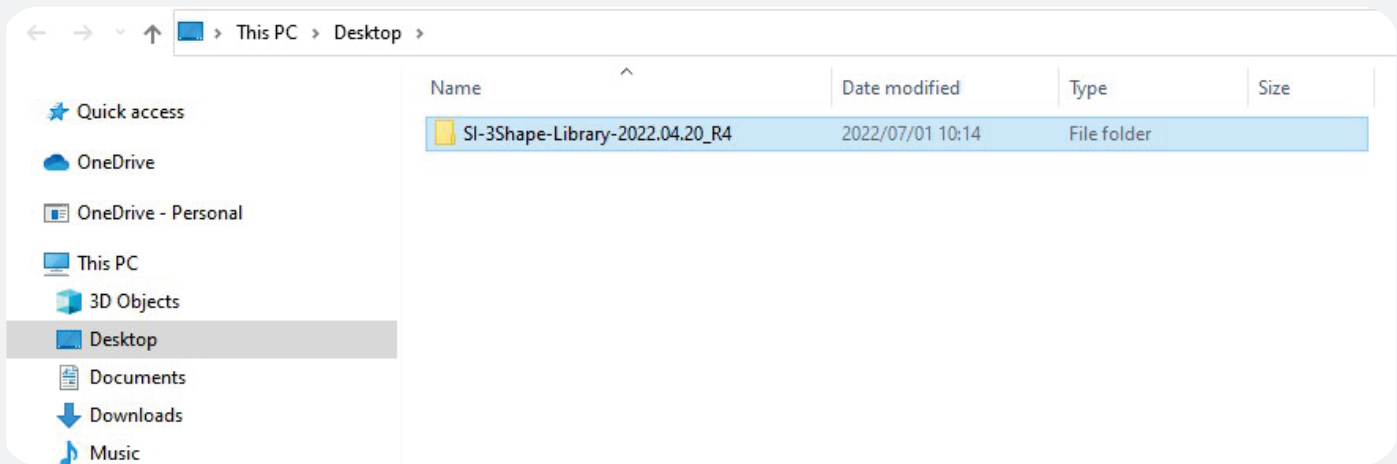
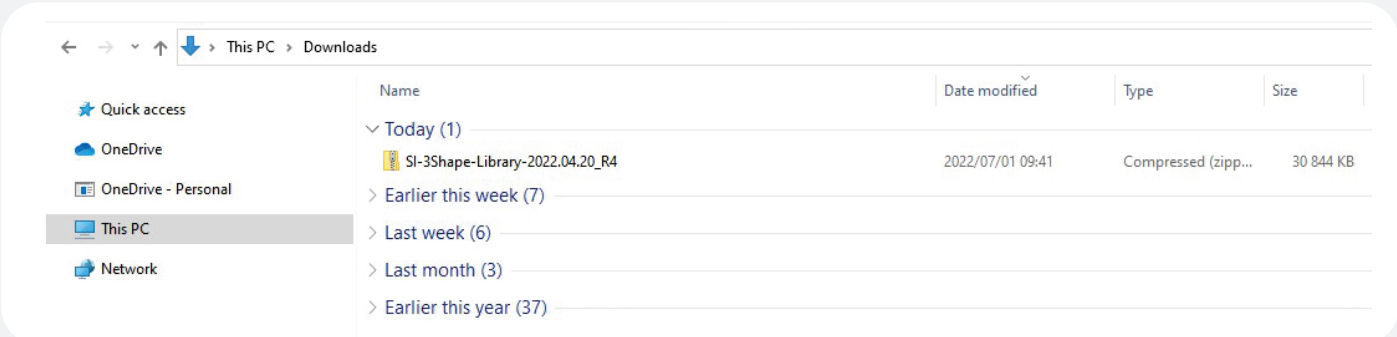
The library is now deleted.

STEP 3

STEP 3.1

Navigate to and unzip the Southern Implants library file

Navigate to your downloads folder on your computer and unzip the library file to a folder directory of your choice.



STEP 3.2

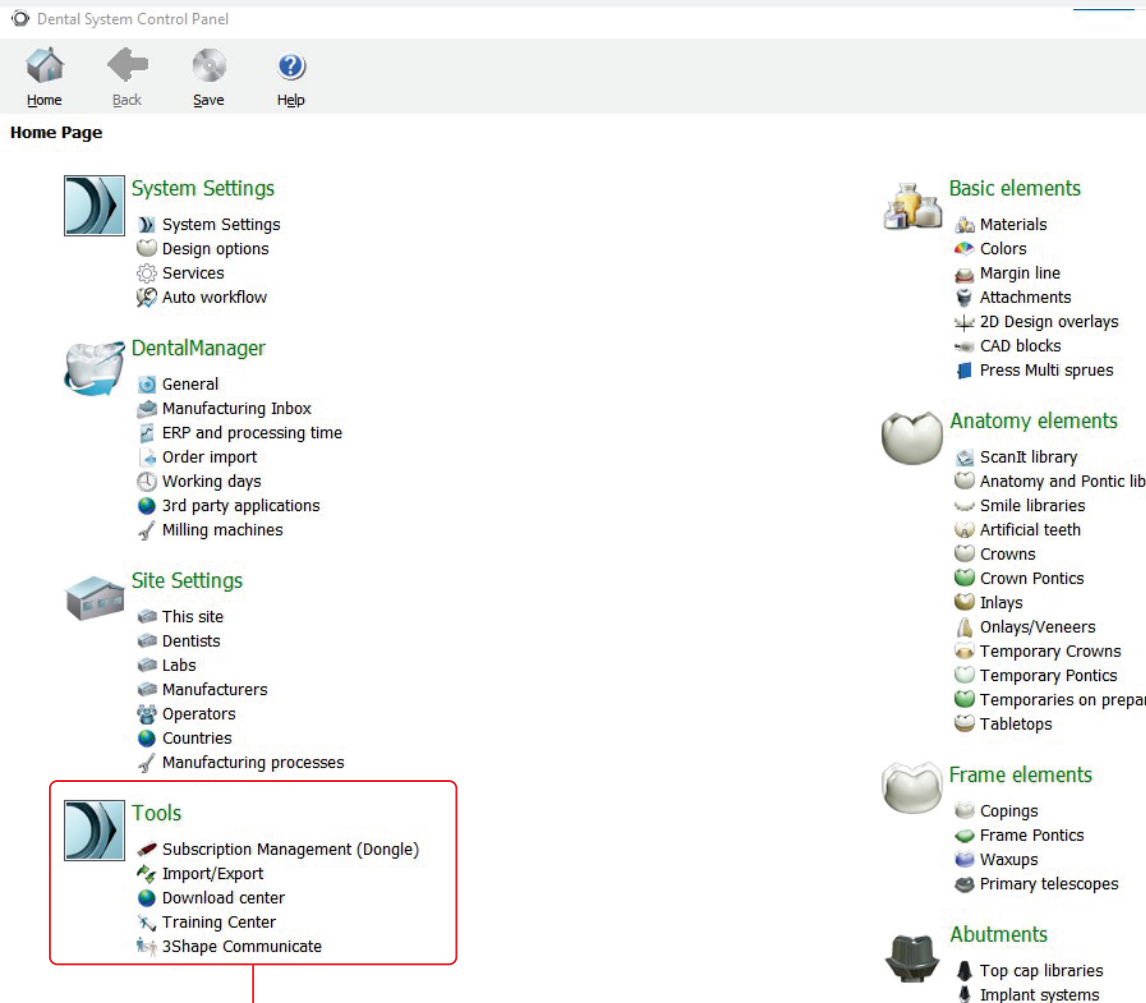
Open 3Shape's Control Panel in Dental Systems



STEP 3.3

Navigate to Import/Export button

Navigate to and click on 'Import/Export' under the 'Tools' heading in the Control Panel.



STEP 3.4

Import Library

Click on 'Import Materials'.

Tools > Import/Export

Tasks

- Export materials
- Import materials

Import materials

To import new materials, click on "Import materials" and browse the desired file (extension ".dme"). Then select the materials from the list that appeared on a screen and click "Import". Typically it is recommended to select all. You can also download the materials directly from FTP - go to Site Settings -> Sites page and click "Download Materials".

Import materials

History Of Import Materials

Export materials

Clone system

STEP 3.5

Navigate to the Southern Implants Library

Navigate to the folder where the library was saved in step 1.3 and open the folder.

Open

< > > > > This PC > Desktop >

Organise >

New folder

Quick access

OneDrive

OneDrive - Personal

This PC

3D Objects

Desktop

Name

Date modified

Type

SI-3Shape-Library-2022.04.20_R4

2022/07/01 10:33

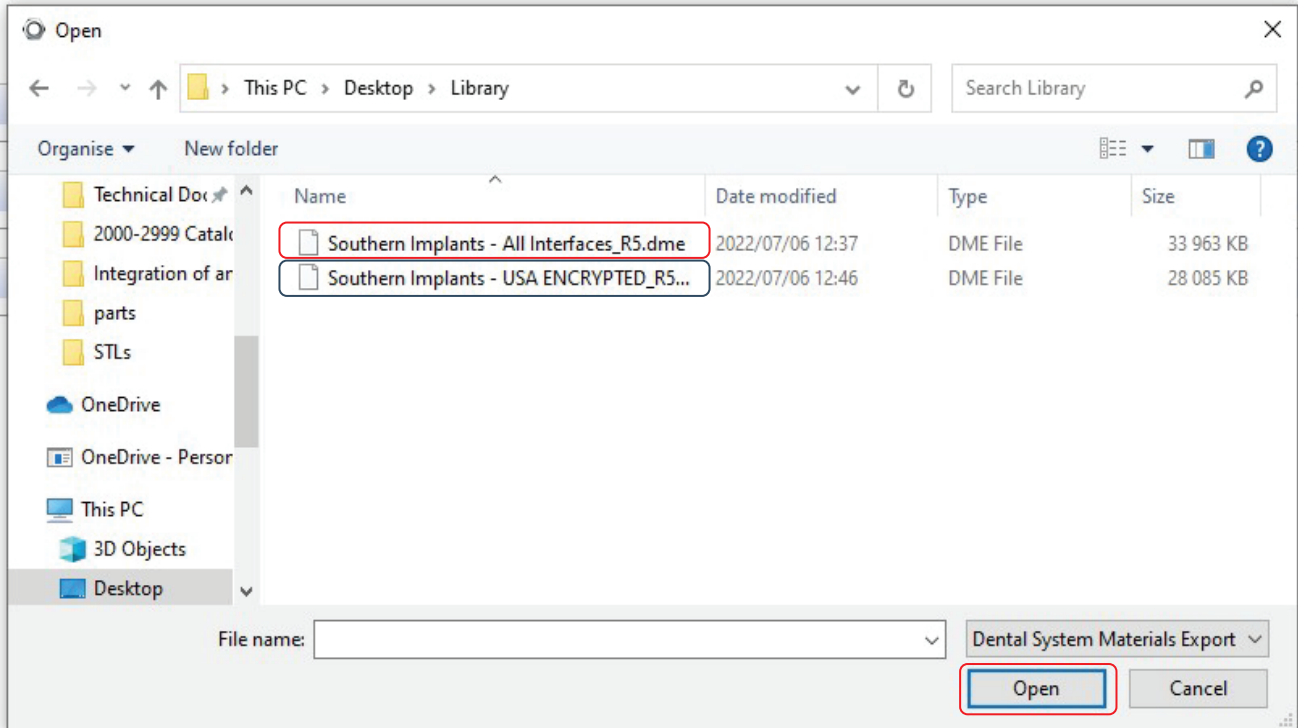
File folder

STEP 3.6

Select the library to upload

For USA Users: click to upload the FDA Encrypted library (labeled with '(USA)' in the file name).
For all other users: click to upload the 'Southern Implants All Interfaces' file.

Once the correct library has been selected, click 'open'.

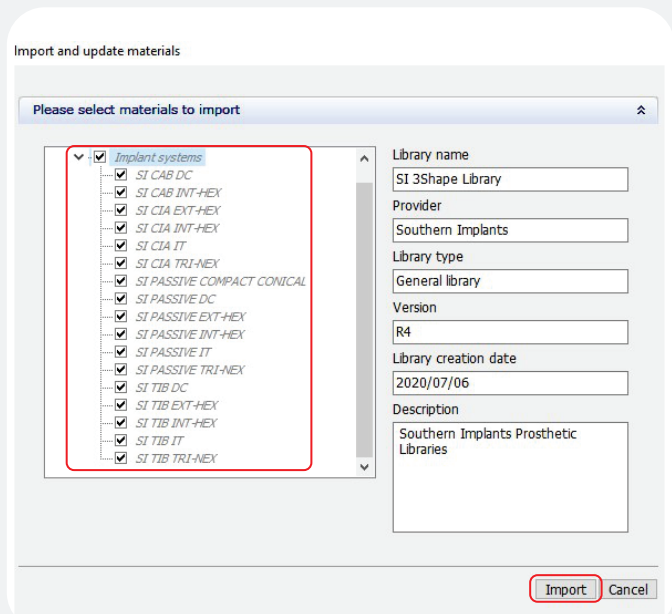
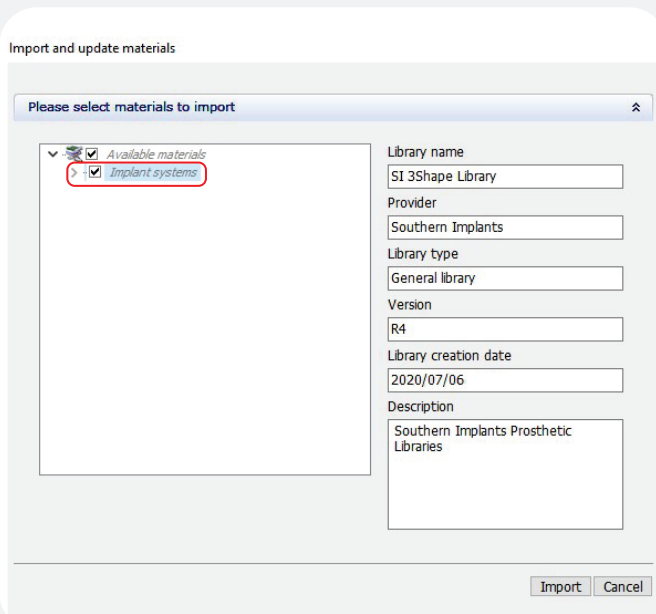


STEP 3.7

Select the files from the Southern Implants Library to import

Click on Implant Systems to expand the library

Select desired implant systems and click 'import'.

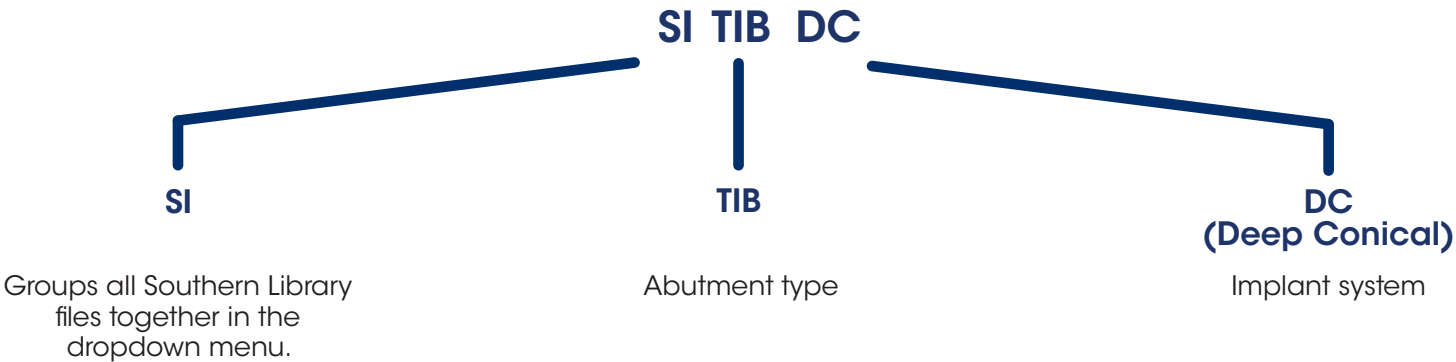


The 3Shape library is now successfully installed.

ADDITIONAL INFORMATION

SIDIGITAL naming Scheme

Main software selection



Secondary software selection

