



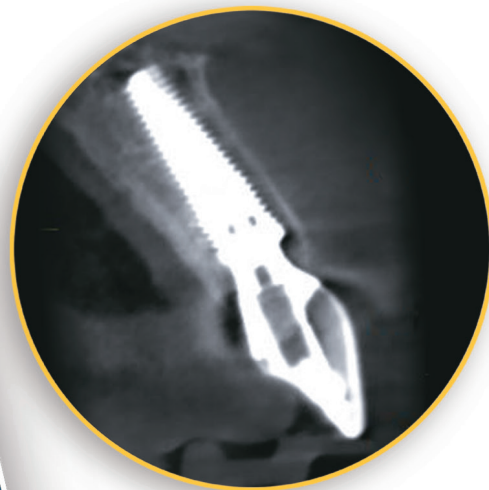
**SOUTHERNIMPLANTS®**

Innovative Treatment Solutions

## Southern Implants Hex Family

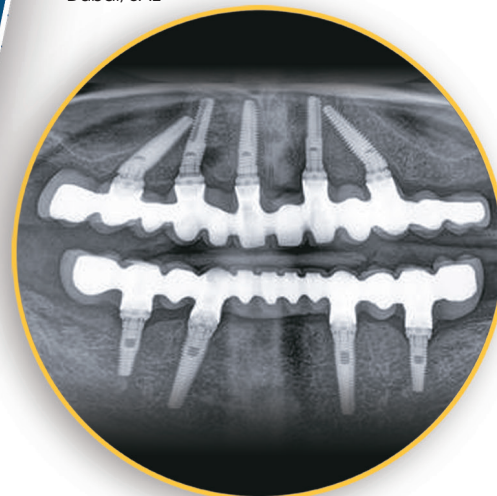


PROVATA® Internal Hex and  
External Hex Implants -  
Two Connections, only  
One Surgical Kit



Radiograph courtesy of  
Prof. Pär-Olov Östman  
Falun, Sweden

Radiograph courtesy of  
Drs. Costa Nicolopoulos  
and Safa Tamasebi  
Same Day Implants  
Dubai, UAE

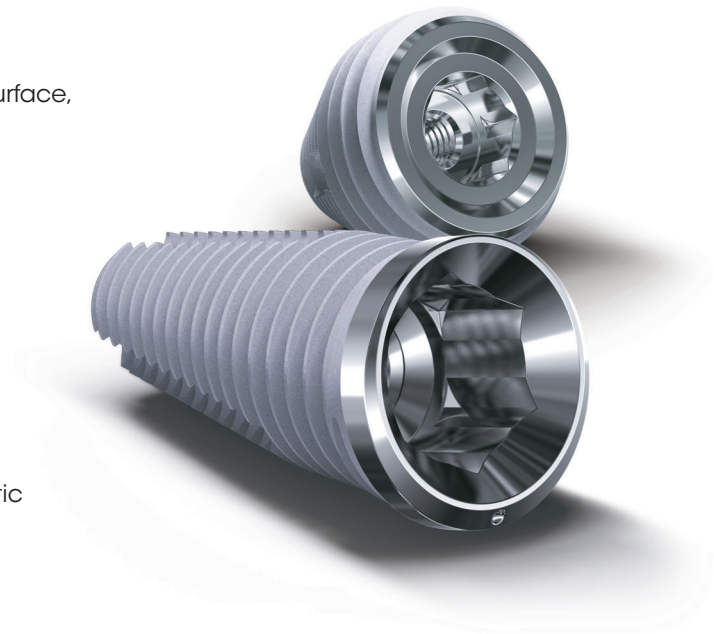


# Southern's State-of-the-Art Hex Family, Including the New Internal Hex PROVATA® Implant

Providing Optimal Outcomes  
with Innovative Treatment Solutions.

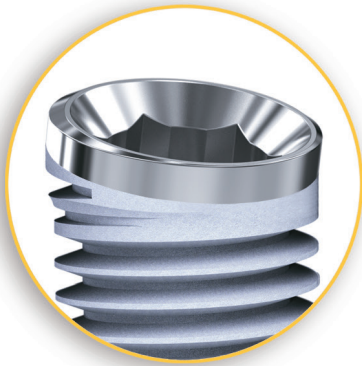
Both PROVATA Internal and  
External Hex Connection  
Implants offer:

- **Strength:** High strength, Grade 4 CP Titanium (>900MPa)
- **Reliability** 20 years clinical results with the moderately roughened SInergy™ Surface, with a 1.4µm Sa Value.
- **Simplicity:** Only one surgical kit required
- **Flexibility:** Choose your preferred implant design; available in Co-Axis®, MAX and Standard Implant Designs with digital and stock restorative options
- **Treatment Options:** Wide range of prosthetic options for treatment of single tooth, partial or fully edentulous



**Whether the treatment solution purposely determines the implant connection or you have a preference for that scenario, Southern's Hex Implants have you covered.**

PROVATA® Internal and External Hex Implants



#### **Internal Hex Connection**

Internal hex is one of the most popular interfaces for its simplicity and ease of use.

- Excellent tactile sensibility during placement of prosthetic components
- Ideal rotational stability and butt joint seating
- Two prosthetic options drastically reduce inventory requirements
- Beveled collar allows for built-in platform shift



#### **External Hex Connection**

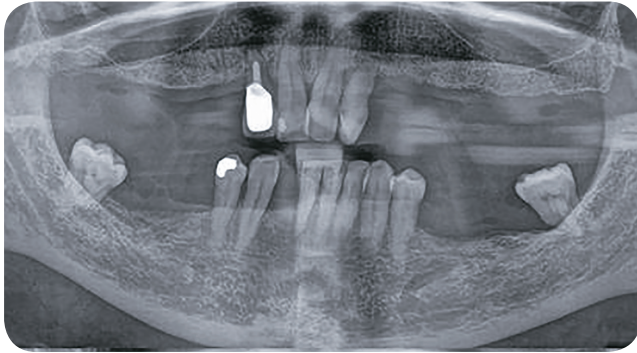
Widely known as the most well-established connection system on the market, Southern Implants continues to refine its External Hex prosthetic options, providing clinicians with exceptional reliability and proven contemporary features:

- Classic, trusted connection
- Provides for an expansive range of body shapes, lengths, diameters, platform angulations and specialized designs without compromising strength
- Clinical support with widespread use and availability

# Purpose and Preference for Simplified c

## Immediate Full-Arch Rehabilitation with External Hex Standard, 12° and 24° Co-Axis® Implants

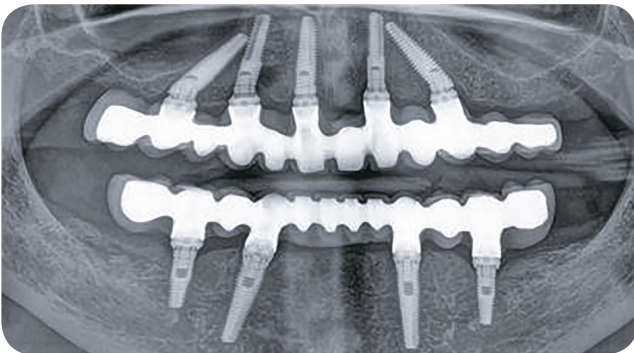
**Clinical Case By:** *Dr. Costa Nicolopoulos and Dr. Safa Tamasebi. Same Day Implants, Dubai, UAE*



**Fig. 1** Pre-operative radiograph showing bone loss and failing dentition.



**Fig. 2** Patient is unhappy with aesthetics of smile and comfort of removable partial denture.



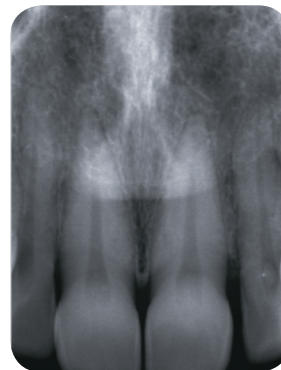
**Fig. 3** Post-operative radiograph showing the failing dentition extracted. 12° and 24° Co-Axis Implants placed in the maxilla and Standard implants placed in the mandible with a screw retained bridge.



**Fig. 4** Patient is delighted with appearance and function of fixed prosthesis.

## Predictable Anterior Aesthetics with PROVATA® 12° Co-Axis Implants

**Clinical Case By:** *Prof. Pär-Olov Östman  
Falun, Sweden*



**Fig. 1** Pre-operative radiograph showing central incisors with hairline fractures.



**Fig. 2** Pre-operative clinical.



# and Accelerated Treatment Solutions

## Post Extraction Molar Tooth Replacement with PROMAX

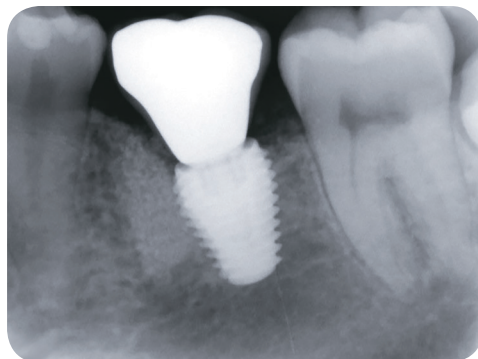
**Clinical Case By:** Prof. Pär-Olov Östman. Falun, Sweden



**Fig. 1** Pre-operative radiograph showing a failed first molar after endodontic therapy.



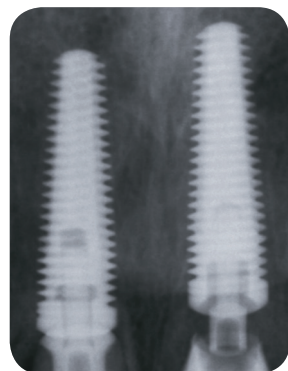
**Fig. 2** Tooth was decorinated, then drilling procedure commenced through tooth.



**Fig. 3** Post-operative radiograph showing PROMAX implant placed with final crown.



**Fig. 4** Post-operative clinical with final crown.



**Fig. 3** Post-operative radiograph showing PROVATA 12° Co-Axis internal hex implants placed with provisional prosthetics.



**Fig. 4** Post-operative clinical with provisional prosthetics in place.

# Innovative Prosthetic Options

PROVATA® and External Hex Abutment options include components such as Cover Screws, Healing Abutments, Prosthetic Cylinders, as well as a number of innovative prosthetic solutions, designed to overcome commonly encountered restorative challenges.

## Digital Options



Scan  
Flags



Passive  
Abutment

## Screw Retained Options



Passive  
Abutment



UCLA

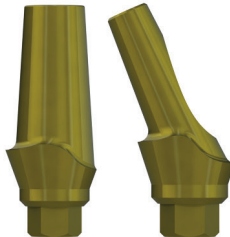


Compact  
Conical  
Abutment

## Cement Retained Options

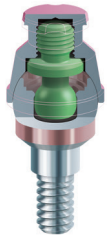


UCLA



Titanium  
Abutment

## Overdenture Options



LOCATOR F-Tx®  
Fixed Attachment System†

For more information, please contact your  
Southern Implants Representative or visit [southernimplants.com](http://southernimplants.com)



225 Chimney Corner Lane, Suite 3011, Jupiter, Florida 33458  
T: 1 800 359 1708 | F: 1 561 472 8401

**Southern Implants Products are distributed world-wide, please visit [southernimplants.com](http://southernimplants.com) for a list of distributors.**

©2019 Southern Implants (Pty) Ltd. All rights reserved. Co-Axis, PROVATA and Southern Implants are registered trademarks and Sinergy is a trademark of Southern Implants (Pty) Ltd. Not all products available in all markets.  
F-Tx and LOCATOR F-Tx are registered trademarks of Zest IP Holdings, LLC.

†Only available for External Hex Implants.