



SOUTHERNIMPLANTS®

Innovative Treatment Solutions

History
Value Proposition
Treatment Solution Focus
Commitment

Optimized Protocols
For Less Invasive,
Accelerated
Implant Therapy



Our Value Proposition

Guided by Quality

The company is rigorously supervised in terms of ISO13485, with top management deeply involved in all aspects of production.

Southern strictly adheres to Q300, a three step quality assurance process to confirm that tight tolerance specifications are verified throughout the manufacturing process.

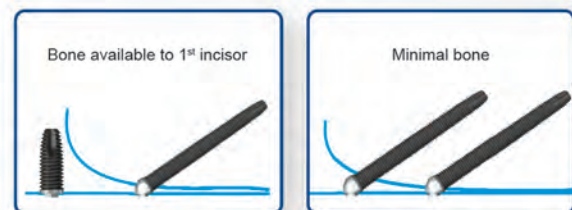
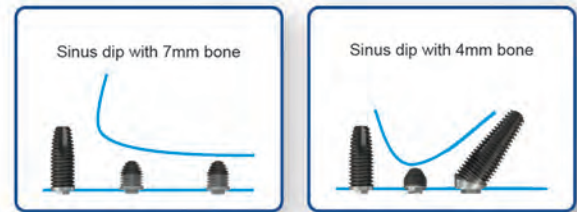
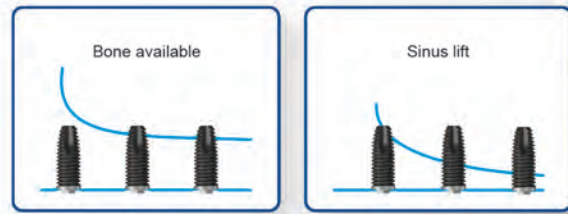
Focused on Innovation

Southern Implants believes in comprehensive product research and development, and supports well-directed investigative studies to substantiate the efficacy of its innovations.

As a privately-owned company, it is well positioned to deliver expanded practical treatment options with a focus on continually improving patient outcomes. The company looks to, and is grateful for, the clinician innovators whose breakthrough ideas help shape the future of implant dentistry.

Devoted to Efficient Treatment Protocols

Disciplined expansion of implant therapy is necessary for maintaining high success rates. Efficient treatment protocols that maximize a patient's available healthy bone is a simple way to achieve this.





Graham Blackbeard

Founder and Managing Director
Southern Implants (Pty) Ltd.

Founded in 1987 by engineer Graham Blackbeard, Southern Implants is rooted in design innovation and the manufacture of medical devices.

Swedish surgeon and Professor, Per-Ingvar Brånemark known as the “father” of modern dental implantology, invited highly experienced South African specialists and academics to train with him in the mid-1980s. Upon their return to South Africa, the specialists introduced the science of implant dentistry to two leading Universities.

Graham Blackbeard was contacted by the specialists to manufacture components to complete treatment for patients. In 1988, Southern Implants started manufacturing implants and associated products.

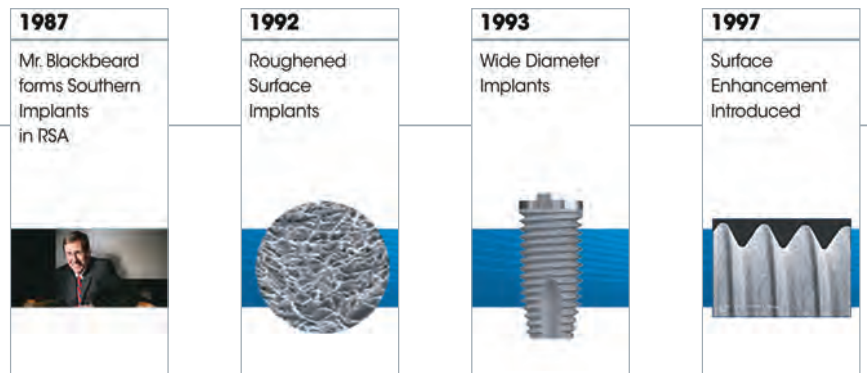
Today, Southern Implants is a leading provider of unique and innovative dental implant products. Southern’s expertise in research, development and manufacturing of dental implants allows the company to provide Innovative Treatment Solutions that will reduce treatment times and improve patient outcomes.

Our History

In our 30-year history, Southern Implants has evolved into a leading provider of Innovative Treatment Solutions for Optimal Patient Outcomes.

Southern’s mission is to continue its stream of breakthrough innovations providing advanced clinical solutions to effectively and efficiently treat challenging cases.

Innovation Timeline -
30 Years of Milestone Introductions



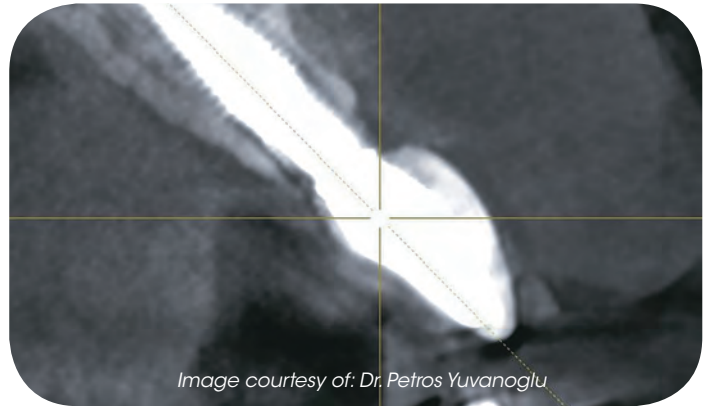
Treatment Solution Focus



Predictable Anterior Aesthetics

The Co-Axis® Implant features 12° Subcrestal Angle Correction® for ideal implant placement.

The INVERTA™ Co-Axis Implant combines the Subcrestal Angle Correction feature a the new Body-Shift™ design for optimizing immediate anterior aesthetics.



Immediate Full-Arch Rehabilitation

55° Zygomatic, Nazalus, 12°, 24°, and 36° Co-Axis, and MAX Implants, and standard implants, provide an unparalleled options to successfully treat immediate full-arch cases. These implants can be used for anatomical challenges and avoid bone grafting procedures.

2000

Internal Octagon Tapered Body

45° Zygomatic



2002

First 55° Zygomatic Implants



2003

Co-Axis® 12° Implants

The Passive Abutment



2005

Co-Axis 24° Implants



2006

MAX Implant



2008

MAX in Multiple Connections



2009

Co-Axis 36° Implants



Post-Extraction Molar Tooth Replacement

The genuine MAX Implant is indicated for immediate placement in multi-rooted extraction sockets.

A larger-than-conventional coronal diameter and taper facilitates primary stability.

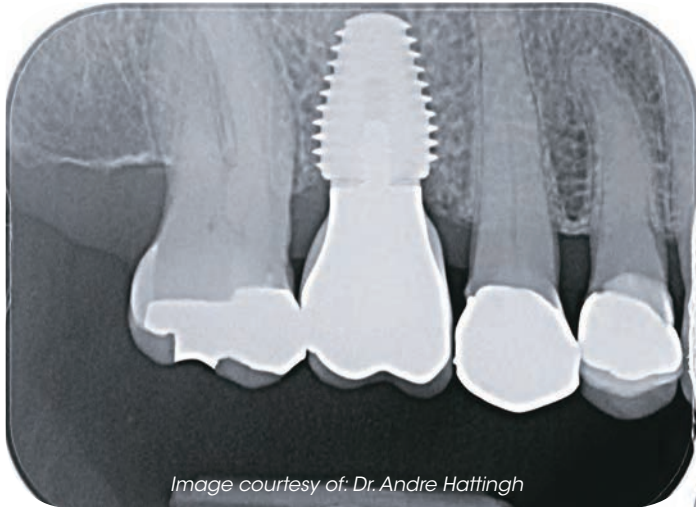


Image courtesy of: Dr. Andre Hattingh

The MAX Implant was the first implant cleared by the FDA for immediate placement in a molar extraction socket.

Innovative Treatment Solutions for Optimal Patient Outcomes achieved through unique implant designs.

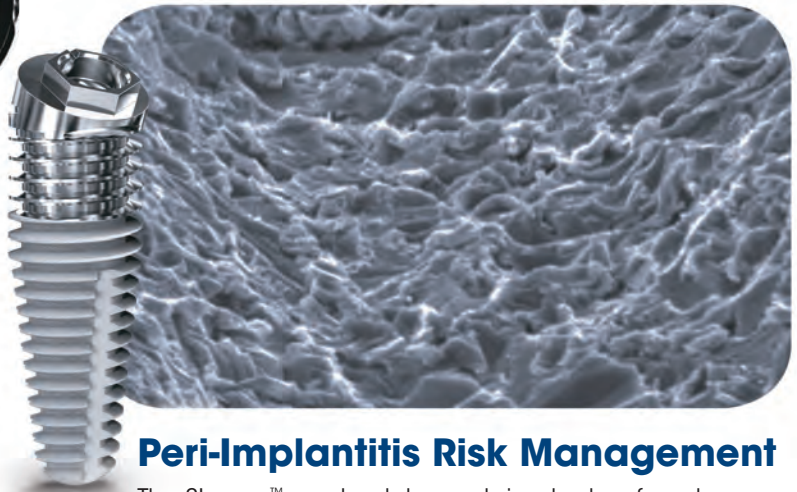
Cranio-Facial Reconstruction

Southern Implants works with leading rehabilitation centers around the world to develop solutions in cancer and trauma patients for challenging reconstructions.

Oncology 55°, Co-Axis and Ultra-Short Implants allow clinicians to restore and rehabilitate the most needy of patients.



Image courtesy of: Dr. Greg Boyes-Varley & Prof. Dale Howes



Peri-Implantitis Risk Management

The Slnergy™ moderately rough implant surface has more than a decade of follow-up results proving its efficacy. High-risk patients can benefit from the Machined Surface Coronal (MSc) for better long-term outcomes¹.

1. Vandeweghe S, Ferreira D, Vermeersch L, Mariën M, De Bruyn H. Long-term retrospective follow-up of turned and moderately rough implants in the edentulous jaw. Clin. Oral Impl. Res. 00, 1-6

2013

Deep Conical M-Series



2014

Machined Surface Coronal (MSc) Piccolo 3.0mm



2015

Extra Oral Ultra-Short Implants



2016

NAZALUS Implants



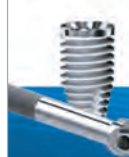
2017

Zygan™ Implants



2018

PROVATA™ & Zygex Implants



2019

INVERTA™ Implants



Our Commitment

- Remain privately owned
- Dedicated to research to make sound decisions on product development
- Continued search for solutions to overcome everyday challenges in implant dentistry
- Develop innovative products that broaden the range of patients that can be treated



"Southern Implants has a history of evolving innovative solutions by being responsive to the needs of the specialist users. This commitment by an industry partner to interface with clinicians has led to patient centered solutions that have stood the test of time."

- Dr. Andrew Ackermann,
Johannesburg, South Africa



"In the highly specialized esthetic clinic, the ability to treat all of our anterior cases with a screw-retained definitive restoration, is critical. An implant solution that achieves this, while also preserving mid-facial soft tissue, is essential. Southern Implants INVERTA™ and Co-Axis® designs offer this consistently."

- Dr. Stephen J. Chu,
New York, USA



"Everyday standard implants are no longer good enough for expanding patient treatment, accelerated therapy, predictable esthetics and maxillofacial prosthetics. The next generation, site-specific implants developed by Southern Implants innovators and research teams addresses most of these important considerations."

- Prof. Dale Howes,
Johannesburg, South Africa



"Immediate full arch rehabilitation requires implants that manage around anatomical constraints and avoid lengthy and costly grafting procedures. The Southern Implants family of specially designed implants are invaluable for this purpose."

- Dr. Costa Nicolopoulos,
Athens, Greece

To learn more contact your
Southern Implants Representative or visit southernimplants.com



South Africa - Headquarters 1 Albert Road, Irene, RSA
T: +27-12-667-1046 | **E:** info@southernimplants.com

Subsidiaries

Australia
Southern Implants Australia
T: +61-2-8076-9337
E: info@southernimplants.com.au

United Kingdom and Ireland
Southern Implants UK
T: +44-20-8899-6845 / 6 / 7
E: info@southernimplants.co.uk

USA and Canada
Southern Implants North America Inc.
T: +1-561-472-0990
E: customercare@southernimplants.com

Southern Implants are distributed world-wide, please visit southernimplants.com for a list of Distributors.

©2019 Southern Implants (Pty) Ltd. All rights reserved. Co-Axis, Southern Implants and Subcrestal Angle Correction are registered trademarks and INVERTA, PROVATA, Sinergy and Zygan are trademarks of Southern Implants (Pty) Ltd. Not all products available in all markets.